

**er** erelektronik

**ÜRÜN KATALOĐU  
2026**



<b>Sabit Akım Kompakt Led Sürücüler</b>	<b>1</b>
Sabit Akım Led Sürücüler	1
Dali Dim Edilebilir Led Sürücüler	2
Dali Dim Edilebilir Led Sürücüler IP68	2
<b>Sabit Akım Lineer Led Sürücüler</b>	<b>3</b>
Sabit Akım Led Sürücüler IP20 Non Selv	3
Dim Edilebilir Led Sürücüler	3
Sokak Armatürü Led Sürücüler IP67 / 1-10 V	3
<b>Sabit Gerilim Led Sürücüler</b>	<b>4</b>
Sabit Gerilim Led Sürücüleri	4
Dali / 1-10 V Dim Edilebilir Sabit Gerilim Led Sürücüleri	4
Dim Edilebilir Sabit Gerilim Led Sürücüleri IP66	4
<b>Ray Adaptörü Led Sürücüler</b>	<b>5</b>
<b>Acil Aydınlatma Kitleri</b>	<b>5</b>
<b>Gerilim Darbe Koruyucuları</b>	<b>5</b>
<b>Sabit Akım Dış Mekan Led Sürücüler</b>	<b>6</b>
<b>MXG Serisi Led Sürücüler</b>	<b>6</b>
MXG	6-7
MXG-D	6-7
<b>MDK Serisi Led Sürücüler</b>	<b>8</b>
MDK IP 42 Koruma Sınıfı	8
<b>MXC Serisi Led Sürücüler</b>	<b>9</b>
<b>MXK Serisi Led Sürücüler</b>	<b>10</b>
MXK-FP NFC+Programlanabilir	10
MXK-GX NFC+Programlanabilir	11
<b>MAL Serisi Led Sürücüler</b>	<b>12</b>
MAL-H	13
<b>MAC Serisi Led Sürücüler</b>	<b>14</b>
MAC	15
MCC	15
MAC-A	15
<b>SPF Serisi Led Sürücüler</b>	<b>16</b>
<b>Gerilim Darbe Koruyucu</b>	<b>17</b>
<b>Sabit Gerilim Dış Mekan Led Sürücüler</b>	<b>18-19</b>
<b>RXG Serisi Led Sürücüler</b>	<b>18-19</b>
<b>RAP Serisi Led Sürücüler</b>	<b>20</b>

**DONE**

<b>Push 2 Fix</b>	<b>21</b>
Standart	21
P2F SMD	21
<b>SMD Terminal Blocks</b>	<b>21-22</b>
Mini Flex	21
Mini Flex Push-Through	22
Nano	22
Pico	22
<b>COB Connectors</b>	<b>23</b>
<b>OptiSpot Lensler</b>	<b>23</b>
<b>OptiLine Optics</b>	<b>23-26</b>
OptiLine Flex	23
OptiLine Performance With Low UGR,Pitch Depending	24
OptiLine 3x11	24
BJB Optic P2F	24
OptiLine Louvre	25
OptiLine Louvre 3x3	25
Louvre Mini (18mm)	26
<b>OptiLine Square Optics</b>	<b>26-27</b>
4x4 (Outdoor) Zhaga Book 15	26
8 in 1(Outdoor) Zhaga Book 15	26
OptiLine Square: 2x2 (Outdoor)	27
<b>Terminal Blocks</b>	<b>28-30</b>
2 Kutup	28
3 Kutup	28
4 Kutup	28
5 Kutup	29
RAST	29
Aksesuar	29
Compact RAST 5 Terminal Block	30
Universal Installation Connectors	30
<b>Mains Disconnect</b>	<b>31</b>
<b>Trunking System</b>	<b>31</b>
7 Kutup	31
<b>Receptacle Zhaga Book 18</b>	<b>32</b>
Base-Plate / Dome,Cover For Receptacle 47.121 (Zhaga Book 18)	32
<b>Zhaga Book 18 Sensor Case</b>	<b>32</b>
Base-Plate / Dome,Cover For Receptacle 47.121 (Zhaga Book 18)	32
<b>Devre Kesici</b>	<b>33</b>
<b>Zhaga Konnektor</b>	<b>33</b>
<b>Zhaga Sensör Kutusu</b>	<b>33</b>
<b>Nema Konnektor</b>	<b>34</b>
<b>Nema Kısa Devre Kapağı</b>	<b>34</b>
<b>Nema Sensör Kutusu</b>	<b>34</b>
<b>Sabit Gerilim IP67 Led Sürücüler</b>	<b>35</b>

## Sabit Akım Led Sürücüler



TCI Kodu	Tanımı	Çalışma Aralığı	Ürün Bilgi Föyü
145154	Professionale Eco 14W	14W - 350/500/550/700 mA	<a href="#">Datasheet</a>
145155	Professionale Eco 17W	17W - 250/300/350/400 mA	<a href="#">Datasheet</a>
145156	Professionale Eco 25W	25W - 450/500/550/600 mA	<a href="#">Datasheet</a>
145157	Professionale Eco 33W	33W - 650/700/750/800 mA	<a href="#">Datasheet</a>
145158	Professionale Eco 40W	40W - 500/600/700/800 mA	<a href="#">Datasheet</a>
145159	Professionale Eco 44W	44W - 850/900/950/1050 mA	<a href="#">Datasheet</a>



TCI Kodu	Tanımı	Çalışma Aralığı	Ürün Bilgi Föyü
122281I	Eco Flat 10W	90/140/190/240 mA	<a href="#">Datasheet</a>
122282I	Eco Flat 15W	250/275/325/350 mA	<a href="#">Datasheet</a>
122283I	Eco Flat 21W	350/400/450/500 mA	<a href="#">Datasheet</a>
122284I	Eco Flat 30W	550/600/700/750 mA	<a href="#">Datasheet</a>
122285I	Eco Flat 40W	800/900/950/1050 mA	<a href="#">Datasheet</a>



TCI Kodu	Tanımı	Çalışma Aralığı	Ürün Bilgi Föyü
127710	MP 15 HPFU	60-300/320/340/360 mA	<a href="#">Datasheet</a>

Made in Italy

Made in Italy



## Dali Dim Edilebilir Led Sürücüler



TCI Kodu	Tanımı	Çalışma Aralığı	Ürün Bilgi Föyü
145160	Professionale Dali Eco 14W	14W - 350/500/550/700 mA	<a href="#">Datasheet</a>
145161	Professionale Dali Eco 17W	17W - 250/300/350/400 mA	<a href="#">Datasheet</a>
145162	Professionale Dali Eco 25W	25W - 450/500/550/600 mA	<a href="#">Datasheet</a>
145163	Professionale Dali Eco 33W	33W - 650/700/750/800 mA	<a href="#">Datasheet</a>
145165	Professionale Dali Eco 40W	40W - 500/600/700/800 mA	<a href="#">Datasheet</a>
145164	Professionale Dali Eco 44W	44W - 850/900/950/1050 mA	<a href="#">Datasheet</a>

Made in Italy



142190	Mini Slim Dali 15 W	15 W 100...700 mA	<a href="#">Datasheet</a>
--------	---------------------	-------------------	---------------------------

Made in Italy



125403	Dc Mini Jolly Dali	20W - 250...700 mA AM / PWM	<a href="#">Datasheet</a>
151140	Mini Jolly Easy Dali	25W - 150...900 mA AM / PWM	<a href="#">Datasheet</a>

Made in Italy



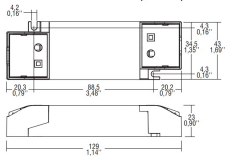
142016	Pro Flat 10 Dali	10W - 150...700mA	<a href="#">Datasheet</a>
142017	Pro Flat 10 Dali BI	10W - 150...700mA	<a href="#">Datasheet</a>
127600	Pro Flat LC Dali	22W - 150...500mA AM	<a href="#">Datasheet</a>
127576	Pro Flat Dali	26W - 250...700mA AM	<a href="#">Datasheet</a>
142014	Pro Flat 38 Dali NFC	38W - 150...1050mA AM NFC	<a href="#">Datasheet</a>
142015	Pro Flat 38 Dali NFC BI	8W - 150...1050mA AM NFC	<a href="#">Datasheet</a>

## Dali Dim Edilebilir Led Sürücüler IP68

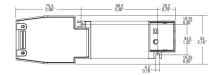


TCI Kodu	Tanımı	Çalışma Aralığı	Ürün Bilgi Föyü
152004	DC Maxi Jolly SV Dali IPR1	20W-250...700 mA AM / PWM	<a href="#">Datasheet</a>
152040	Pro Flat 38 Dali NFC IPR3	38W-150...1050 mA AM / PWM	<a href="#">Datasheet</a>

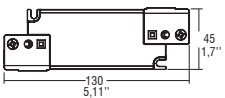
## Eco Serisi İçin Kapaklar



TCI Kodu	Tanımı	Çalışma Aralığı	Ürün Bilgi Föyü
488787805	Screwless Strain Relief For Ind. Use	2 PCS (1 for primary 1 for secondary side)	<a href="#">Datasheet</a>



488787807	Strain Relief For Looping With Screw	2 PCS (1 for primary 1 for secondary side)	<a href="#">Datasheet</a>
-----------	--------------------------------------	--	---------------------------



488787570K1	Strain Relief For Eco Flat Series	2 PCS (1 for primary 1 for secondary side)	<a href="#">Datasheet</a>
-------------	-----------------------------------	--	---------------------------

## Sabit Akım Led Sürücüler IP20 Non SELV

TCI Kodu	Tanımı	Çalışma Aralığı	Ürün Bilgi Föyü
127514	MPE 18/350 Slim	18 W - 200/250/300/350 mA	<a href="#">Datasheet</a>
127515	MPE 42/350 Slim	42 W - 200/250/300/350 mA	<a href="#">Datasheet</a>
127516	MPE 60/350 Slim	60 W - 200/250/300/350 mA	<a href="#">Datasheet</a>
127517	MPE 75/550 Slim	75 W - 200/250/300/350 mA	<a href="#">Datasheet</a>
127518	MPE 80/350 Slim	80 W - 200/250/300/350 mA	<a href="#">Datasheet</a>
122212	MP 80/350 Slim	80 W - 200 ...350 mA	<a href="#">Datasheet</a>
122214I	MP 80/500 Slim	80 W - 350... 500 mA	<a href="#">Datasheet</a>
122213	MP 80/700 Slim	80 W - 325... 700 mA	<a href="#">Datasheet</a>
127726	MPM 100/525 Slim	100 W - 150...525 mA	<a href="#">Datasheet</a>
127676	MP 120/700 Slim	120 W - 325...700 mA	<a href="#">Datasheet</a>
127678	MPX 165/800 Slim	165 W - 525...800 mA	<a href="#">Datasheet</a>
127725	MPXM 165/900 Slim	165 W - 525...900 mA	<a href="#">Datasheet</a>

## Dali Dim Edilebilir Led Sürücüler



Corridor

TCI Kodu	Tanımı	Çalışma Aralığı	Ürün Bilgi Föyü
127610	S-Led 35/350 Dali Slim	35 W 0.08-0.35 A	<a href="#">Datasheet</a>
127611	S-Led 60/350 Dali Slim	60 W 0.08-0.35 A	<a href="#">Datasheet</a>
127612	S-Led 60/500 Dali Slim	60 W 0.15-0.5 A	<a href="#">Datasheet</a>
127615	S-Led 90/700 Dali Slim	90 W 0.20-0.70 A	<a href="#">Datasheet</a>
127613	S-Led 100/500 Slim NFC	100 W 0.15-0.5 A	<a href="#">Datasheet</a>
127614	S-Led 150/700 Slim NFC	150 W 0.2-0.7 A	<a href="#">Datasheet</a>

## Sokak Armatürü Led Sürücüler IP67 / 1-10V

TCI Kodu	Tanımı	Çalışma Aralığı	Ürün Bilgi Föyü
127848	Vega 75 / 940-1880 FPD IP67	75 W - 940...1880 mA 38... 62 V IP67	<a href="#">Datasheet</a>
127830	Vega 105 / 1250-2500 FPD IP67	105 W - 1250...2500 mA 38...62 V IP67	<a href="#">Datasheet</a>
127831	Vega 150 / 1800-3600 FPD IP67	150 W - 1800...3600 mA 38...62 V IP67	<a href="#">Datasheet</a>
127832	Vega 200 / 2500-5000 FPD IP67	200 W - 2500...5000 mA 38... 62 V FPD IP67	<a href="#">Datasheet</a>
127833	Vega 240 / 2850-5710 FPD IP67	240 W - 2850...5710 mA 38...62 V FPD IP67	<a href="#">Datasheet</a>
127862	Vega 320 / 3750-7500 FPD IP67	320 W - 3750...7500 mA 38...62 V FPD IP67	<a href="#">Datasheet</a>
127845	Vega 320 / 550-1100 FPD IP67	320 W - 550... 1100 mA 228...457 V FPD IP67	<a href="#">Datasheet</a>
127857	Vega 600 / 3250-12500 12V FPD IP67	600 W - 6,25...12,5A 27...56 V SELV IP67	<a href="#">Datasheet</a>

## Sabit Gerilim Led Sürücüler

TCI Kodu	Tanımı	Çalışma Aralığı	Ürün Bilgi Föyü
127820	LCV 30 W 24 V	30 W - 24 V	Datasheet
127821	LCV 60 W 24 V	60 W - 24 V	Datasheet
127822	LCV 75 W 24 V	75 W - 24 V	Datasheet
127823	LCV 90 W 24 V	90 W - 24 V	Datasheet
127824	LCV 120 W 24 V	120 W - 24 V	Datasheet
127825	LCV 180 W 24 V	180 W - 24 V	Datasheet



145112	CVD Flat 150 W	150 W - 24 V	Datasheet
145113	CVD Flat 200 W	200 W - 24 V	Datasheet



## Dali / 1-10V Dim Edilebilir Sabit Gerilim Led Sürücüler



TCI Kodu	Tanımı	Çalışma Aralığı	Ürün Bilgi Föyü
127960	DC 70 W 24 V Dali Slim	70 W - 24 V DALI - 1-10 V	Datasheet
127966	DC 120 W 24 V Slim RM Dali	120 W - 24 V DALI - 1-10 V	Datasheet



## Dali Dim Edilebilir Sabit Gerilim Led Sürücüleri IP66



TCI Kodu	Tanımı	Çalışma Aralığı	Ürün Bilgi Föyü
145101	CVD 100 W 24 V Dali	100 W -24 V IP66	Datasheet
145102	CVD 200 W 24 V Dali	200 W -24 V IP66	Datasheet
145103	CVD 300 W 24 V Dali	300 W -24 V IP66	Datasheet



## Ray Adaptörü Led Sürücüler



TCI Kodu	Tanımı	Çalışma Aralığı	Ürün Bilgi Föyü
145166 B/W/G	GA-016 Süper	40 W - 300...1050 mA	<a href="#">Datasheet</a>
127991 B/W/G	GA-017 Süper	31 W - 200...700 mA	<a href="#">Datasheet</a>
127985 B/W/G	GA-016 Süper	40 W - 300...1050 mA	<a href="#">Datasheet</a>
127986 B/W/G	GA-017 Süper	31 W - 200...700 mA	<a href="#">Datasheet</a>
127987 B/W/G	GA-017 Süper	31 W - 200...700 mA	<a href="#">Datasheet</a>

## Acil Aydınlatma Kitleri



TCI Kodu	Tanımı	Çalışma Aralığı	Ürün Bilgi Föyü
123051	Eled 3 W 10-55 V 1H BI	1H - Lifepo 4 Selv 60	<a href="#">Datasheet</a>
123052	Eled 3 W 20-105 V 1H BI	1H - Lifepo 4 Selv 120	<a href="#">Datasheet</a>
123053	Eled 3 W 100-220 V 1H BI	1H - Lifepo 4 Not - Selv	<a href="#">Datasheet</a>
123051/3	Eled 3 W 10-55 V 3H BI	3H - Lifepo 4 Selv 60	<a href="#">Datasheet</a>
123052/3	Eled 3 W 20-105 V 3H BI	3H - Lifepo 4 Selv 120	<a href="#">Datasheet</a>
123053/3	Eled 3 W 100-220 V 3H BI	3H - Lifepo 4 Not - Selv	<a href="#">Datasheet</a>



## Gerilim Darbe Koruyucuları



TCI Kodu	Tanımı	Çalışma Aralığı	Ürün Bilgi Föyü
126127	Spd Gm CLI	Spd 12 kV	<a href="#">Datasheet</a>
126128	Spd Gm CLII	Spd 12 kV	<a href="#">Datasheet</a>

## MXG Serisi LED Sürücüler



### Ürün Özellikleri

- \* %96'ya varan verimlilik
- \* IP67 koruma sınıfı
- \* 15 kV'a kadar gerilim darbe koruma seviyesi
- \* Çıkış kısa devre koruması, düşük voltaj koruması, aşırı sıcaklık koruması, aşırı yük koruması, aşırı gerilim koruması
- \* Ömür uyarısı, ışık kaybı telafisi
- \* 5 yıl garanti

### MXG Potansiyometre/Programlanabilir Akım Ayarı, 12 V Aux Çıkışı

- \* Giriş gerilimi: 120-277Vac
- \* Çıkış gücü: 30-720W
- \* IP67 koruma sınıfı

A: Potansiyometre versiyonu P: Programlanabilir versiyonu X: 12V Harici Çıkış Versiyonu

CE / CCC / SAA / ENEC / UL / FC / CLASS P

### MXG-D DALI 2.0 / D4i + Programlanabilir + 12 V Aux Çıkışı,

- \* DALI 2.0 / D4i + 12V harici çıkış
- \* Giriş gerilimi: 120-277Vac,
- \* Çıkış gücü: 30-240W
- \* IP67 koruma sınıfı

DX: DALI 2.0  
GX: DALI 2.0 + D4i

DALI / CE / CCC / ENEC / SAA



## MXG

Power	Model	Output Power	Input Voltage	Output Voltage	Constant power voltage	Output Current	Efficiency	Power Factor	Lightning protection rating	Product Size
75W	DL-75W/WK-V108A/P/X-MXG	75W	120-277V	54-108V	72-108V	0.5-1.05A	90%	0.95	6KV/15KV	138*63*32mm
100W	DL-100W/WK-V143A/P/X-MXG	100W	120-277V	71-143V	95-143V	0.5-1.05A	91%	0.95	6KV/15KV	153*63*32mm
150W	DL-150W/WK-V214A/P/X-MXG	150W	120-277V	95-214V	143-214V	0.5-1.05A	93%	0.95	6KV/15KV	186*63*32mm
200W	DL-200W/WK-V286A/P/X-MXG	200W	120-277V	143-286V	190-286V	0.5-1.05A	93.5%	0.95	6KV/15KV	199*63*37mm

## MXG-D DALI 2.0 / D4i

Power	Model	Output Power	Input Voltage	Output Voltage	Constant power voltage	Output Current	Efficiency	Power Factor	Lightning protection rating	Product Size
30W	DL-30W-V56DX-MXG	30W	120-277V	25-56V	30-56V	0.3-1A	89%	0.95	6KV/15KV	110*63*32mm
50W	DL-50W-V56DX/GX-MXG	50W	120-277V	25-56V	30-56V	0.6-1.7A	89%	0.95	6KV/15KV	110*63*32mm
	DL-50W-V72DX/GX-MXG	50W	120-277V	36-72V	48-72V	0.5-1.05A	89%	0.95	6KV/15KV	110*63*32mm
75W	DL-75W-V56DX/GX-MXG	75W	120-277V	25-56V	36-56V	0.85-2.1A	89%	0.95	6KV/15KV	138*63*32mm
	DL-75W-V108DX/GX-MXG	75W	120-277V	54-108V	72-108V	0.5-1.05A	90%	0.95	6KV/15KV	138*63*32mm
100W	DL-100W-V56DX/GX-MXG	100W	120-277V	25-56V	36-56V	1.3-2.8A	91%	0.95	6KV/15KV	153*63*32mm
	DL-100W-V143DX/GX-MXG	100W	120-277V	71-143V	95-143V	0.5-1.05A	91%	0.95	6KV/15KV	153*63*32mm
150W	DL-150W-V56DX/GX-MXG	150W	120-277V	25-56V	36-56V	1.8-4.2A	92%	0.95	6KV/15KV	186*63*32mm
	DL-150W-V214DX/GX-MXG	150W	120-277V	95-214V	143-214V	0.5-1.05A	92%	0.95	6KV/15KV	186*63*32mm
200W	DL-200W-V56DX/GX-MXG	200W	120-277V	25-56V	36-56V	2.6-5.6A	93.5%	0.95	6KV/15KV	199*63*37mm
	DL-200W-V286DX/GX-MXG	200W	120-277V	143-286V	190-286V	0.5-1.05A	93.5%	0.95	6KV/15KV	199*63*37mm
240W	DL-240W-V56DX/GX-MXG	240W	120-277V	25-56V	36-56V	3.5-6.7A	94%	0.95	6KV/15KV	217*63*37mm
	DL-240W-V343DX/GX-MXG	240W	120-277V	171-343V	228-343V	0.5-1.05A	94%	0.95	6KV/15KV	217*63*37mm

DX: DALI  
GX: DALI 2.0 + D4i



Power	Model	Output Power	Input Voltage	Output Voltage	Constant power voltage	Output Current	Efficiency	Power Factor	Lightning protection rating	Product Size
30W	DL-30W-V56A/P/X-MDK	30W	120-277V	25-56V	30-56V	0.33-1A	88%	0.95	6KV/10KV	119*57*32mm
50W	DL-50W-V56A/P/X-MDK	50W	120-277V	25-56V	30-56V	0.4-1.7A	89%	0.95	6KV/10KV	119*57*32mm
	DL-50W-V72A/P/X-MDK	50W	120-277V	36-72V	48-72V	0.5-1.05A	89%	0.95	6KV/10KV	119*57*32mm
75W	DL-75W-V56A/P/X-MDK	75W	120-277V	25-56V	30-56V	0.85-2.1A	89%	0.95	6KV/10KV	138*57*32mm
	DL-75W-V108A/P/X-MDK	75W	120-277V	54-108V	72-108V	0.5-1.05A	89%	0.95	6KV/10KV	138*57*32mm
100W	DL-100W-V56A/P/X-MDK	100W	120-277V	25-56V	36-56V	1.3-2.8A	89.5%	0.95	6KV/10KV	153*57*32mm
	DL-100W-V143A/P/X-MDK	100W	120-277V	71-143V	95-143V	0.5-1.05A	91%	0.95	6KV/10KV	153*57*32mm
150W	DL-150W-V56A/P/X-MDK	150W	120-277V	25-56V	36-56V	1.7-4.2A	92%	0.95	6KV/10KV	186*57*32mm
	DL-150W-V214A/P/X-MDK	150W	120-277V	95-214V	143-214V	0.5-1.05A	92%	0.95	6KV/10KV	186*57*32mm
200W	DL-200W-V56A/P/X-MDK	200W	120-277V	25-56V	36-56V	2.6-5.6A	92%	0.95	6KV/10KV	199*57*37mm
	DL-200W-V286A/P/X-MDK	200W	120-277V	143-286V	190-286V	0.5-1.05A	92%	0.95	6KV/10KV	199*57*37mm
240W	DL-240W-V56A/P/X-MDK	240W	120-277V	25-56V	36-56V	3.5-6.7A	93%	0.95	6KV/10KV	217*57*37mm
	DL-240W-V343A/P/X-MDK	240W	120-277V	171-343V	228-343V	0.5-1.05A	93%	0.95	6KV/10KV	217*57*37mm

A: Potansiyometre versiyonu P: Programlanabilir versiyon X: 12 V Yardımcı çıkış versiyonu





## Ürün Özellikleri

- \*Yüksek güç yoğunluğu, kompakt boyutlar
- \*Giriş voltajı: 100-277 Vac
- \*Çıkış voltajı: 25-56V
- \*IP67 Koruma Sınıfı
- \*15 kV'a kadar gerilim darbe koruma seviyesi
- \* Çıkış kısa devre koruması, düşük voltaj koruması, aşırı sıcaklık koruması, aşırı yük koruması, aşırı gerilim koruması
- \* Ömür uyarısı, ışık kaybı telafisi
- \* 5 yıl garanti

A:Potansiyometre akım versiyonu P: Programlanabilir kısma versiyonu

CB / CE / CCC / SAA / ENEC



Power	Model	Output Power	Input Voltage	Output Voltage	Constant power voltage	Output Current	Efficiency	Power Factor	Lightning protection rating	Product Size
240W	DL-240H-56A/P-MXC	240W	100-277V	25-56V	36-56V	3.5-6.7A	94%	0.95	6/15KV	186*60*38mm
	DL-240H-343A/P-MXC	240W	100-277V	171-343V	228-343V	0.5-1.05A	94%	0.95	6/15KV	186*60*38mm
320W	DL-320H-56A/P-MXC	320W	100-277V	25-56V	42-56V	4.2-7.65A	94%	0.95	6/15KV	230*67*38mm
	DL-320H-428A/P-MXC	320W	100-277V	228-428V	304-428V	0.5-1.05A	94%	0.95	6/15KV	230*67*38mm

A: Potansiyometre versiyonu P: Programlanabilir versiyon

# MXK Serisi Led Sürücüler



## Ürün Özellikleri

- \*SINIF I - II uyumlu
- \*Zhaga Arayüz Spesifikasyonu 13'e uygundur
- \*Zhaga Arayüz Spesifikasyonu 24' e uygundur
- \*Giriş voltajı: 176-305 Vac
- \*10 kV'a kadar gerilim darbe koruma seviyesi
- \*IP20 koruma sınıfı
- \* %93,5 'e varan verimlilik
- \* Çıkış kısa devre koruması, düşük voltaj koruması, aşırı sıcaklık koruması, aşırı yük koruması, aşırı gerilim koruması
- \* Ömür uyarısı, ışık kaybı telafisi
- \* 5 yıl garanti

### MXK-FP NFC+Programlanabilir

NFC  
CB / CE / CCC / SAA / RoHS

### MXK-GX NFC+DALI&D4i+Programlanabilir+Yardımcı Kaynak

- DALI 2.0 ve D4i sertifikalı
- NFC
- DC 24V harici çıkış

CB / CE / CCC / SAA / RoHS / DALI

## MXK-FP NFC+Programlanabilir

Power	Model	Output Power	Input Voltage	Output Voltage	Constant power voltage	Output Current	Efficiency	Power Factor	Lightning protection rating	Product Size
22W	DL-22H-V32FP-MXK	22W	176- 305V	8-32V	21-32V	0.5-1.05A	88%	0.95	6KV/10KV	133*77*33mm
40W	DL-40H-V58FP-MXK	40W	176- 305V	25-58V	38-58V	0.5-1.05A	89%	0.95	6KV/10KV	133*77*33mm
60W	DL-60H-V80FP-MXK	60W	176- 305V	38-80V	58-80V	0.5-1.05A	89%	0.95	6KV/10KV	133*77*33mm
80W	DL-80H-V115FP-MXK	80W	176- 305V	46-115V	76-115V	0.5-1.05A	90%	0.95	6KV/10KV	133*77*33mm
110W	DL-110H-V158FP-MXK	110W	176- 305V	76-158V	105-158V	0.5-1.05A	91%	0.95	6KV/10KV	133*77*33mm
165W	DL-165H-V235FP-MXK	165W	176- 305V	104-235V	157-235V	0.5-1.05A	93%	0.95	6KV/10KV	171*101*39mm
200W	DL-200H-V286FP-MXK	200W	176- 305V	157-286V	190-286V	0.5-1.05A	93.5%	0.95	6KV/10KV	171*101*39mm

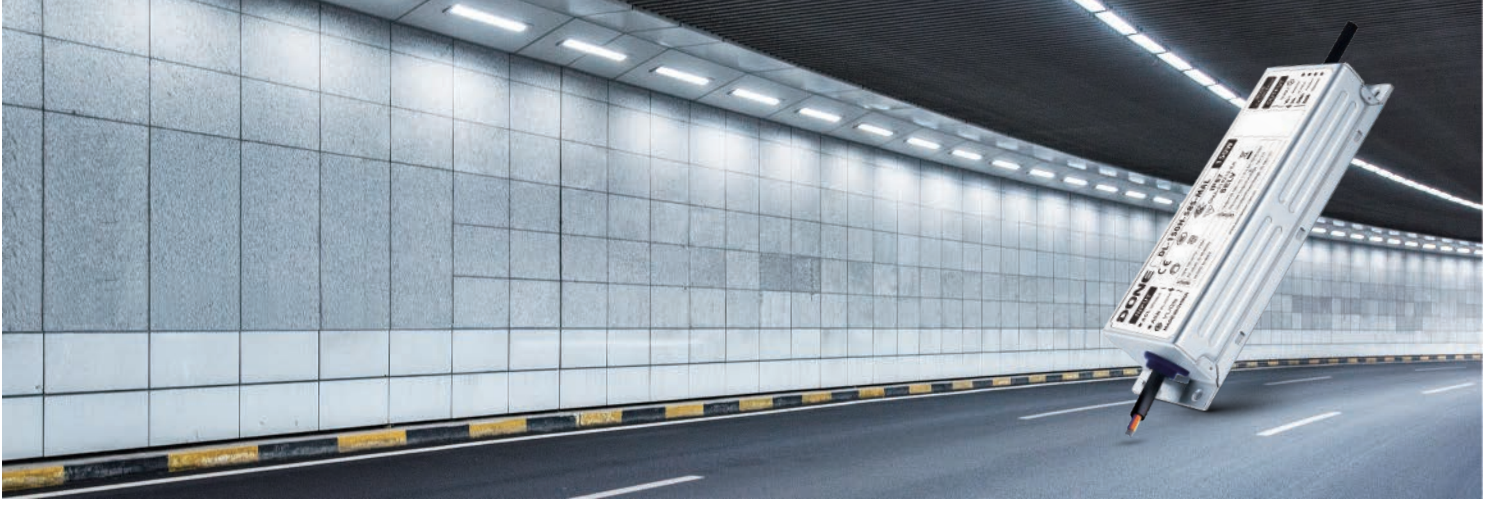


## MXK-Gx NFC+Programlanabilir



Power	Model	Output Power	Input Voltage	Output Voltage	Constant power voltage	Output Current	Efficiency	Power Factor	Lightning protection rating	Product Size
22W	DL-22H-V32GX-MXK	22W	200-277V	8-32V	21-32V	0.5-1.05A	88%	0.95	6KV/10KV	133*77*33mm
40W	DL-40H-V58GX-MXK	40W	200-277V	25-58V	38-58V	0.5-1.05A	89%	0.95	6KV/10KV	133*77*33mm
60W	DL-60H-V80GX-MXK	60W	200-277V	38-80V	58-80V	0.5-1.05A	89%	0.95	6KV/10KV	133*77*33mm
80W	DL-80H-V115GX-MXK	80W	200-277V	46-115V	76-115V	0.5-1.05A	90%	0.95	6KV/10KV	133*77*33mm
110W	DL-110H-V158GX-MXK	110W	200-277V	76-158V	105-158V	0.5-1.05A	91%	0.95	6KV/10KV	133*77*33mm
165W	DL-165H-V235GX-MXK	165W	200-277V	104-235V	157-235V	0.5-1.05A	93%	0.95	6KV/10KV	171*101*39mm
200W	DL-200H-V286GX-MXK	200W	200-277V	157-286V	190-286V	0.5-1.05A	93.5%	0.95	6KV/10KV	171*101*39mm

GX: DALI 2.0 & D4I + NFC Programlama + NTC + 24V Harici Çıkışlar



## Ürün Özellikleri

\*Kompakt yapısal tasarım

\*Giriş voltajı : 100-277 Vac

\*15KV IP67 Koruma Sınıfı

\*Çıkış kısa devre koruması, düşük voltaj koruması, aşırı sıcaklık koruması, aşırı yük koruması, aşırı gerilim koruması

\*5 yıl garanti

A: Potansiyometre akım ayarlama versiyonu S: Üçü bir arada karartma versiyonu

CB / CE / CCC / SAA / ENEC / UL / FC



Power	Model	Output Power	Input Voltage	Output Voltage	Constant power voltage	Output Current	Efficiency	Power Factor	Lightning protection rating	Product Size
40W	DL-40H-38A/S-MAL	40W	100-277V	20-38V	32-38V	0.7-1.25A	87%	0.95	4/6KV	100*41*27mm
	DL-40H-58A/S-MAL	40W	100-277V	32-58V	42-58V	0.5-0.96A	89%	0.95	4/6KV	100*41*27 mm
50W	DL-50H-38A/S-MAL	50W	100-277V	20-38V	32-38V	0.7-1.6A	89%	0.95	4/6KV	126*41*29mm
	DL-50H-58A/S-MAL	50W	100-277V	32-58V	42-58V	0.5-1.2A	89%	0.95	4/6KV	126*41*29mm
60W	DL-60H-38A/S-MAL	60W	100-277V	20-38V	32-38V	1.1-1.9A	89%	0.95	4/6KV	126*41*29mm
	DL-60H-58A/S-MAL	60W	100-277V	32-58V	42-58V	0.86-1.43A	89%	0.95	4/6KV	126*41*29mm
75W	DL-75H-38A/S-MAL	75W	100-277V	20-38V	32-38V	1.3-2.54	89%	0.95	4/6KV	126*41*29mm
	DL-75H-58A/S-MAL	75W	100-277V	32-58V	42-58V	0.9-1.8A	89%	0.95	4/6KV	126*41*29mm
	DL-75H-108A/S-MAL	75W	100-277V	54-108V	72-108V	0.5-1.05A	89%	0.95	4/6KV	126*41*29mm
100W	DL-100H-38A/S-MAL	100W	100-277V	20-38V	32-38V	1.8-3.14A	90%	0.95	6/15KV	143*49*32.5mm
	DL-100H-58A/S-MAL	100W	100-277V	32-58V	42-58V	1.3-2.38A	91%	0.95	6/15KV	143*49*32.5mm
	DL-100H-143A/S-MAL	100W	100-277V	71-143V	95-143V	0.5-1.05A	91%	0.95	6/15KV	143*49*32.5mm
150W	DL-150H-38A/S-MAL	150W	100-277V	20-38V	32-38V	2.8-5A	91%	0.95	6/15KV	176*57*32mm
	DL-150H-58A/S-MAL	150W	100-277V	32-58V	42-58V	1.8-3.6A	91%	0.95	6/15KV	176*57*32mm
	DL-150H-214A/S-MAL	150W	100-277V	95-214V	143-214V	0.5-1.05A	91%	0.95	6/15KV	176*57*32mm
200W	DL-200H-38A/S-MAL	200W	100-277V	20-38V	32-38V	3.7-6.7A	91%	0.95	6/15KV	186*60*38mm
	DL-200H-58A/S-MAL	200W	100-277V	32-58V	42-58V	2.4-4.8A	92%	0.95	6/15KV	186*60*38mm
	DL-200H-286A/S-MAL	200W	100-277V	143-286V	190-286V	0.5-1.05A	92%	0.95	6/15KV	186*60*38mm

A: Potansiyometre akım ayarlama versiyonu S: Üçü bir arada karartma versiyonu





## Ürün Özellikleri

- \* Kompakt tasarım
- \* Giriş voltajı: 100-277Vac
- \* Çıkış akımı ayarı: sabit akım çıkışı (ayarlanamaz), potansiyometre çıkış akımını ayarlar
- \* 5 yıl garanti
- \* IP65 Koruma Sınıfı

## MAC

- \* SINIF II
- \* Giriş voltajı: 100-277Vac Çıkış gücü: 30-50W
- \* Aydınlatma koruma seviyesi: diferansiyel mod 4KV

CB / CE / CCC / SAA / ENEC

## MCC

- \* SINIF II yerleşik uygulama
- Mini plastik kasa, sabit akım çıkışı Giriş voltajı: 100-240Vac
- Çıkış gücü: 3-20W
- Aydınlatma koruma seviyesi: diferansiyel mod 2KV

CE / CCC / SAA / ENEC



## MAC-A

- \* SINIF II
- Giriş voltajı: 100-277Vac Çıkış gücü: 12-70W
- Aydınlatma koruma seviyesi: diferansiyel mod 4KV

CB / CE / CCC / SAA / ENEC



## MAC

Power	Model	Output Power	Input Voltage	Output Voltage	Output Current	Efficiency	Power Factor	Lightning protection rating	Product Size
30W	DL-30Z-C600-MAC	30W	100-277V	25-50V	600mA	88%	0.95	6KV	108*35*26 mm
	DL-30Z-C750-MAC	30W	100-277V	20-42V	750mA	88%	0.95	6KV	108*35*26 mm
	DL-30Z-C900-MAC	30W	100-277V	20-36V	900mA	88%	0.95	6KV	108*35*26 mm
50W	DL-50Z-C900-MAC	50W	100-277V	25-56V	900mA	89%	0.95	6KV	108*35*26 mm
	DL-50Z-C1050-MAC	50W	100-277V	25-50V	1050mA	89%	0.95	6KV	108*35*26 mm
	DL-50Z-C1200-MAC	50W	100-277V	20-38V	1200mA	89%	0.95	6KV	108*35*26 mm
	DL-50Z-C1350-MAC	50W	100-277V	20-38V	1350mA	89%	0.95	6KV	108*35*26 mm
	DL-50Z-C1500-MAC	50W	100-277V	20-36V	1500mA	89%	0.95	6KV	108*35*26 mm



## MCC

Power	Model	Output Power	Input Voltage	Output Voltage	Output Current	Efficiency	Power Factor	Lightning protection rating	Product Size
3W	DL-3W-C350-MCC	3.9W	100-240V	5-11V	350mA	78%	0.9	2KV	52*30*22mm
	DL-3W-C700-MCC	4.2W	100-240V	2-6V	700mA	78%	0.9	2KV	52*30*22mm
7W	DL-7W-C350-MCC	7.W	100-240V	10-20V	350mA	83%	0.9	2KV	52*30*22mm
	DL-7W-C700-MCC	7W	100-240V	5-10V	700mA	79%	0.9	2KV	52*30*22mm
12W	DL-12W-C350-MCC	14.7W	100-240V	21-42V	350mA	84%	0.95	2KV	70*36*23mm
	DL-12W-C700-MCC	14W	100-240V	11-20V	700mA	84%	0.95	2KV	70*36*23mm

\*Müşteri ihtiyacına göre akım ayarlanabilir olup, her model arasındaki akım farkı 30mA'dir.

20W	DL-20W-C350-MCC	16.8W	100-240V	36-58V	350mA	86%	0.9	2KV	70*36*23mm
	DL-20W-C500-MCC	20.5W	100-240V	21-41V	500mA	85%	0.95	2KV	70*36*23mm

\*Müşteri ihtiyacına göre akım ayarlanabilir olup, her model arasındaki akım farkı 50mA'dir.

## MAC-A

Power	Model	Output Power	Input Voltage	Output Voltage	Output Current	Efficiency	Power Factor	Lightning protection rating	Product Size
60W	DL-60Z-AC1350-MAC	34-60W	100-277V	25-45V	1.35A	89%	0.9	4KV	83*70*32mm
	DL-60Z-AC1500-MAC	30-60W	100-277V	20-40V	1.5A	89%	0.9	4KV	83*70*32mm
	DL-60Z-AC1800-MAC	36-60W	100-277V	20-34V	1.8A	89%	0.9	4KV	83*70*32mm





## Ürün Özellikleri



- \*Giriş voltajı: 120-277 Vac
- \*%95'e varan verimlilik
- \*IP 65 Koruma Sınıfı
- \*4/4 kV'a kadar gerilim darbe koruma seviyesi
- \*Çıkış voltajı: 180-260 Vdc
- \*Çıkış kısa devre koruması, düşük voltaj koruması, aşırı sıcaklık koruması, aşırı yük koruması, aşırı gerilim koruması
- \*Ömür>50.000 saat ve 5 yıl garanti.

A: Potansiyometre akım ayarlama versiyonu S: 3' ü 1 arada kısma versiyonu X: 12 yardımcı kaynak versiyonu

CE / CB / FC / CCC / SAA / / CLASS P

Power	Model	Output Power	Input Voltage	Output Voltage	Constant power voltage	Output Current	Efficiency	Power Factor	Lightning protection rating	Product Size
125W	DL-125W-V260A/S/X-SPF	125W	120-277V	180-260V	200-260V	0.25-0.6A	95%	0.95	4KV/4KV	D*H 127*60mm
160W	DL-160W-V260A/S/X-SPF	160W	120-277V	180-260V	200-260V	0.35-0.75A	95%	0.95	4KV/4KV	D*H 127*60mm
200W	DL-200W-V260A/S/X-SPF	200W	120-277V	180-260V	200-260V	0.55-1.05A	95%	0.95	4KV/4KV	D*H 127*60mm
240W	DL-240W-V260A/S/X-SPF	240W	120-277V	180-260V	200-260V	0.75-1.25A	95%	0.95	4KV/4KV	D*H 127*60mm





## LSP10

Aşırı gerilim koruyucu cihaz serisi

### Ürün Özellikleri

1. Giriş voltajı: 100-277V.
2. Nominal deşarj akımı : (IN) 5KV, 8/20µS Maks. . deşarj akımı : (IN) 10KV, 8/20µS.
3. EN61643-11 standardına uygundur.
4. Aşırı Gerilim Koruması : 10KV.



DL-B10S-SPD

CE /  /

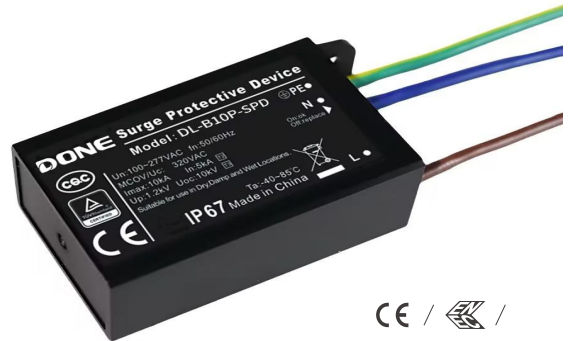
Protection Level **IP67**



Model	Input Voltage	Protection Voltage	Remark
DL-B10P-SPD	100-277V	10KV	In Parallels
DL-B10S-SPD	100-277V	10KV	In Series



DL-B10S-SPD Darbe Koruyucu **CLASS I**



DL-BK10S-SPD Darbe Koruyucu **CLASS II**

## RXG Serisi LED Sürücüler



### Ürün Özellikleri

\* Nominal giriş voltajı: 200~277V.

\* %94'e kadar verimlilik/Yüksek PF>0,97/THD<10%@230Vac.

\* 6/10KV

\* IP67 koruma sınıfı

\* Çıkış kısa devre koruması, düşük voltaj koruması, aşırı sıcaklık koruması, aşırı yük koruması, aşırı gerilim koruması \*\*

\* Ömür>50.000 saat ve 5 yıl garanti

A: Normal versiyon S : 1-10V Dimlenebilir versiyon D: D DALI2.0 Dimlenebilir versiyon

CE / CB / FC / CCC / UL / ENEC

### TEK VOLTAJ SUYA DAYAĞLI SABİT VOLTAJ SERİSİ

Power	Model	Rated power	Input Voltage	Output Voltage	Protection level	Output Current	Efficiency	Power Factor	Lightning protection rating	Product Size
40W	DL-40H-V24-RXG	0-40W	200-277V	24V	IP67	0-1.67A	87%	0.95	4KV/6KV	90*63*32mm
60W	DL-60H-V24-RXG	0-60W	200-277V	24V	IP67	0-2.5A	88%	0.96	4KV/6KV	105*63*32mm
75W	DL-75H-V24-RXG	0-75W	200-277V	24V	IP67	0-3.2A	89%	0.95	4KV/6KV	138*63*32mm
100W	DL-100H-V24-RXG	0-100W	200-277V	24V	IP67	0-4.2A	89%	0.95	4KV/6KV	153*63*32mm
150W	DL-150H-V24-RXG	0-150W	200-277V	24V	IP67	0-6.3A	90%	0.95	4KV/6KV	186*63*32mm
200W	DL-200H-V24-RXG	0-200W	200-277V	24V	IP67	0-8.3A	93%	0.97	4KV/6KV	199*63*37mm
250W	DL-250H-V24-RXG	0-250W	200-277V	24V	IP67	0-10.4A	93%	0.97	4KV/6KV	199*63*37mm
320W	DL-320H-V24-RXG	0-320W	200-277V	24V	IP67	0-13.3A	94%	0.97	4KV/6KV	230*68*37mm
350W	DL-350H-V24-RXG	0-350W	200-277V	24V	IP67	0-14.58A	94%	0.97	6KV/10KV	244*83*40mm
400W	DL-400H-V24-RXG	0-400W	200-277V	24V	IP67	0-16.67A	94%	0.97	6KV/10KV	244*83*40mm

# RXG Serisi LED Sürücüler

# DONE

GENİŞ VOLTAJLI SUYA DAYANIKLI SABİT BASINÇ SERİSİ



Power	Model	Rated power	Input Voltage	Output Voltage	Protection level	Output Current	Efficiency	Power Factor	Lightning protection rating	Product Size
30W	DL-30W-V24-RXG	0-30W	100-277V	24V	IP67	0-1.25A	87%	0.95	4KV/6KV	100*63*32mm
50W	DL-50W-V24-RXG	0-50W	100-277V	24V	IP67	0-2.08A	88%	0.95	4KV/6KV	110*63*32mm
75W	DL-75W-V24-RXG	0-75W	100-277V	24V	IP67	0-3.15A	89%	0.96	4KV/6KV	143*63*32mm
100W	DL-100W-V24-RXG	0-100W	100-277V	24V	IP67	0-4.2A	89%	0.96	4KV/6KV	158*63*37mm
150W	DL-150W-V24-RXG	0-150W	100-277V	24V	IP67	0-6.25A	90%	0.96	4KV/6KV	191*63*37mm
200W	DL-200W-V24-RXG	0-200W	100-277V	24V	IP67	0-8.33A	93%	0.97	4KV/6KV	209*63*37mm
250W	DL-250W-V24-RXG	0-250W	100-277V	24V	IP67	0-10.42A	93%	0.97	4KV/6KV	227*63*37mm
320W	DL-320W-V24-RXG	0-320W	100-277V	24V	IP67	0-13.33A	94%	0.97	4KV/6KV	240*83*40mm
400W	DL-400W-V24-RXG	0-400W	100-277V	24V	IP67	0-16.67A	94.5%	0.97	4KV/6KV	254*83*40mm
500W	DL-500W-V24-RXG	0-500W	100-277V	24V	IP67	0-20.83A	94.5%	0.97	4KV/6KV	255*95*44mm
600W	DL-600W-V24-RXG	0-600W	100-277V	24V	IP67	0-25.0A	94.5%	0.97	4KV/6KV	265*130*45mm



## Ürün Özellikleri

\*Giriş Voltajı: 100-240Vac.

\*12V/24V/36V/48V Sabit voltaj çıkışı.

\*Verimlilik %90'a kadar/THD<10% EN61000-3-2 SINIF A

\*Aşırı dalgalanma koruması : 8-24W: 2KV 30-150W: 4KV

\*Koruma seviyesi: IP67.

\*SCP/OTP/OVP koruması .SCP (Kısa devre koruması), OTP (Aşırı sıcaklık koruması), OVP (Aşırı voltaj koruması)

\*Kimlik doğrulama: 8-24W: CCC、CE、UL、FCC 30-150W:

\*(LVD、EMC)CE、UL、FCC Ömür>30.000 saat. Ve 3 yıl garanti



Power	Model	Rated power	Input Voltage	Output Voltage	Protection level	Output Current	Efficiency	Lightning protection rating	Product Size
8W	DL-8W-V12-RAP	0-8W	100-240V	12V	IP67	0.67A	84%	2KV	52*30*22mm
	DL-8W-V24-RAP	0-8W	100-240V	24V	IP67	0.33A	84%	2KV	52*30*22mm
16W	DL-16W-V24-RAP	0-16W	100-240V	24V	IP67	0.67A	86%	2KV	70*36*23mm
24W	DL-24W-V24-RAP	0-24W	100-240V	24V	IP67	1.00A	88%	2KV	70*36*23mm
30W	DL-30W-V24-RAP	0-30W	100-240V	24V	IP67	0-1.3A	85%	4KV	118*35*26mm
50W	DL-50W-V24-RAP	0-50W	100-240V	24V	IP67	0-2.1A	87%	4KV	118*35*26mm
75W	DL-75W-V24-RAP	0-75W	100-240V	24V	IP67	0-3.1A	88%	4KV	162*40*32mm
100W	DL-100W-V24-RAP	0-100W	100-240V	24V	IP67	0-4.2A	89%	4KV	171*53*37mm
150W	DL-150W-V24-RAP	0-150W	100-240V	24V	IP67	0-6.3A	90%	4KV	182*63*37mm



## Ürün Özellikleri

\*Sabit voltaj çıkışı (12V/24V/48V)

\*Sınıf II ve PFC tasarımına sahip plastik gövde

\*CE ErP direktifine uygun, titreşimsiz

\*Bekleme modunda güç tüketimi <0,5W

\*Acil durum aydınlatması (EL) gereksinimlerini karşılar

\*Minimum %0,1'e kadar kısma (DALI-2 DT6)\*

Kısma fonksiyonları: 3'ü 1 arada kısma (Kısma-kapama) DALI 2 + Basmalı kısma 5 yıl garanti

CB / CE / CCC / SAA / ENEC



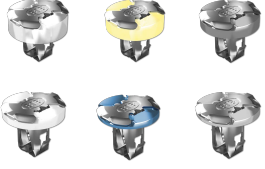
Power	Model	Rated power	Input Voltage	Output Voltage	Output Current	Efficiency	Lightning protection rating	Product Size
8W	DL-8W-V5-RAN	0-8W	200-240V	5V	1.60A	84%	1-2KV	86*30*25mm
	DL-8W-V12-RAN	0-8W	200-240V	12V	0.67A	84%	1-2KV	86*30*25mm
	DL-8W-V24-RAN	0-8W	200-240V	24V	0.33A	84%	1-2KV	86*30*25mm
16W	DL-16W-V5-RAN	0-16W	200-240V	5V	3.20A	86%	1-2KV	86*30*25mm
	DL-16W-V12-RAN	0-16W	200-240V	12V	1.33A	86%	1-2KV	86*30*25mm
	DL-16W-V24-RAN	0-16W	200-240V	24V	0.67A	86%	1-2KV	86*30*25mm
24W	DL-24W-V12-RAN	0-24W	200-240V	12V	2.00A	88%	1-2KV	125*30*25mm
	DL-24W-V24-RAN	0-24W	200-240V	24V	1.00A	88%	1-2KV	125*30*25mm
	DL-24W-V36-RAN	0-24W	200-240V	36V	0.67A	88%	1-2KV	125*30*25mm
30W	DL-30W-V12-RAN	0-30W	200-240V	12V	0-2.5A	89%	1-2KV	125*30*25mm
	DL-30W-V24-RAN	0-30W	200-240V	24V	0-1.25A	89%	1-2KV	125*30*25mm
	DL-30W-V36-RAN	0-30W	200-240V	36V	0-0.83A	89%	1-2KV	125*30*25mm
	DL-30W-V48-RAN	0-30W	200-240V	48V	0-0.63A	89%	1-2KV	125*30*25mm
50W	DL-50W-V12-RAN	0-50W	200-240V	12V	0-4.2A	89%	1-2KV	165*35*28mm
	DL-50W-V24-RAN	0-50W	200-240V	24V	0-2.1A	89%	1-2KV	165*35*28mm
	DL-50W-V36-RAN	0-50W	200-240V	36V	0-1.4A	89%	1-2KV	165*35*28mm
	DL-50W-V48-RAN	0-50W	200-240V	48V	0-1.05A	89%	1-2KV	165*35*28mm

## RAN Serisi LED Sürücüler

Power	Model	Rated power	Input Voltage	Output Voltage	Output Current	Efficiency	Lightning protection rating	Product Size
75W	DL-75W-V12-RAN	0-75W	200-240V	12V	0-6.25A	90%	1-2KV	165*35*28mm
	DL-75W-V24-RAN	0-75W	200-240V	24V	0-3.13A	90%	1-2KV	165*35*28mm
	DL-75W-V36-RAN	0-75W	200-240V	36V	0-2.1A	90%	1-2KV	165*35*28mm
	DL-75W-V48-RAN	0-75W	200-240V	48V	0-1.6A	90%	1-2KV	165*35*28mm
100W	DL-100W-V12-RAN	0-100W	200-240V	12V	0-8.3A	92%	1-2KV	195*35*30mm
	DL-100W-V24-RAN	0-100W	200-240V	24V	0-4.2A	92%	1-2KV	195*35*30mm
	DL-100W-V36-RAN	0-100W	200-240V	36V	0-2.8A	92%	1-2KV	195*35*30mm
	DL-100W-V48-RAN	0-100W	200-240V	48V	0-2.1A	92%	1-2KV	195*35*30mm
150W	DL-150W-V12-RAN	0-150W	200-240V	12V	0-12.5A	92%	1-2KV	195*35*30mm
	DL-150W-V24-RAN	0-150W	200-240V	24V	0-6.25A	92%	1-2KV	195*35*30mm
	DL-150W-V36-RAN	0-150W	200-240V	36V	0-4.2A	92%	1-2KV	195*35*30mm
	DL-150W-V48-RAN	0-150W	200-240V	48V	0-3.15A	92%	1-2KV	195*35*30mm
200W	DL-200W-V12-RAN	0-200W	200-240V	12V	0-16.6A	93.5%	1-2KV	255*38*32mm
	DL-200W-V24-RAN	0-200W	200-240V	24V	0-8.33A	93.5%	1-2KV	255*38*32mm
	DL-200W-V36-RAN	0-200W	200-240V	36V	0-5.55A	93.5%	1-2KV	255*38*32mm
	DL-200W-V48-RAN	0-200W	200-240V	48V	0-4.16A	93.5%	1-2KV	255*38*32mm
250W	DL-250W-V12-RAN	0-250W	200-240V	12V	0-20.8A	94%	1-2KV	255*38*32mm
	DL-250W-V24-RAN	0-250W	200-240V	24V	0-10.41A	94%	1-2KV	255*38*32mm
	DL-250W-V36-RAN	0-250W	200-240V	36V	0-6.94A	94%	1-2KV	255*38*32mm
	DL-250W-V48-RAN	0-250W	200-240V	48V	0-5.20A	94%	1-2KV	255*38*32mm



## Standart



BJB Kodu	Tanımı	Ürün Bilgi Föyü
28.901.U162-002-03	1,5 - 2,0 mm (total package thickness)	Datasheet
28.901.U163-002-03	2,0 - 2,4 mm	Datasheet
28.901.U164-002-04	2,4 - 2,7 mm	Datasheet
28.901.U165-002-03	2,7 - 3,2 mm	Datasheet
28.901.U166-002-03	3,2 - 3,6 mm	Datasheet
28.901.U169-001-00	4,0 mm	Datasheet
28.901.U801-000-00	Tool	Datasheet
28.901.U811-000-00	Assembly bit with magnet for P2F fixing elements	Datasheet
28.901.U812-000-00	P2F-setting tool for optic-holder 20 mm LED boards, 31.930.-342, 31.930.-343	Datasheet

## P2F SMD



BJB Kodu	Tanımı	Ürün Bilgi Föyü
28.904.U101-002-04	1,5 - 2,6 mm (Solderable)	Datasheet
28.904.U102-002-01	1,8 -2,9 mm (Solderable)	Datasheet
28.901.U801-000-00	Tool	Datasheet
28.904.U811-000-01	Magnetic Bit, Thickness 2.4 - 2.6	Datasheet
28.904.U812-000-01	Magnetic Bit, Thickness 1,8 - 2,3	Datasheet
28.904.U813-000-02	Magnetic Bit, Thickness 1,5 - 1,7	Datasheet



# SMD Terminal Blocks

## Mini Flex



BJB Kodu	Tanımı	Ürün Bilgi Föyü
28.904.U101-002-04	1,5 - 2,6 mm (Solderable)	Datasheet
28.904.U102-002-01	1,8 -2,9 mm (Solderable)	Datasheet
28.904.U812-000-01	Magnetic Bit, Thickness 1,8 - 2,3	Datasheet
28.904.U813-000-02	Magnetic Bit, Thickness 1,5 - 1,7	Datasheet
46.131.U701-001-02	SMD Mini-B2B-Connector 1 Pole, 26 mm	Datasheet
46.131.U702-001-01	SMD Mini-B2B-Ponnector 1 Pole, 28 mm	Datasheet
46.131.U703-001-01	SMD Mini-B2B-Ponnector 1 Pole, 30 mm	Datasheet
46.132.U701-002-02	SMD Mini-B2B-Connector 2 Pole, 26 mm	Datasheet
46.132.U702-001-01	SMD Mini-B2B-Connector 2 Pole, 28 mm	Datasheet
46.132.U703-001-01	SMD Mini-B2B-Connector 2 Pole, 30 mm	Datasheet
46.133.U701-001-01	SMD Mini-B2B-Connector 3 Pole, 26 mm	Datasheet

## Mini Flex Push-Through

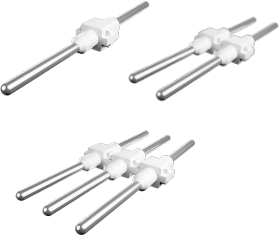


BJB Kodu	Tanımı	Ürün Bilgi Föyü
46.121.1002-004-03	Rear 1 Pole HV	<a href="#">Datasheet</a>
46.111.1001-004-16	Rear 1 Pole	<a href="#">Datasheet</a>
46.112.1001-001-17	Rear 2 Pole	<a href="#">Datasheet</a>

## Nano



BJB Kodu	Tanımı	Ürün Bilgi Föyü
46.131.2001-005-02	Top 1 Pole "New Gen,Releasable"	<a href="#">Datasheet</a>
46.132.2001-003-02	Top 2 Pole "New Gen,Releasable"	<a href="#">Datasheet</a>



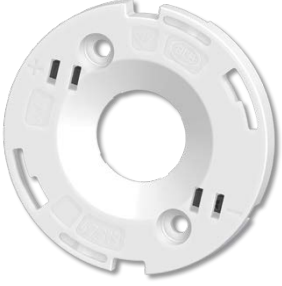
46.141.U701-001-00	SMD Nano-B2B-Connector 1 Pole	<a href="#">Datasheet</a>
46.142.U701-001-00	SMD Nano-B2B-Connector 2 Pole	<a href="#">Datasheet</a>
46.143.U701-000-00	SMD Nano-B2B-Connector 3 Pole	<a href="#">Datasheet</a>

## Pico



BJB Kodu	Tanımı	Ürün Bilgi Föyü
46.110.1001-002-06	SMD 1 Pole "Pico" Pure Metall SMD Connector, Releasable	<a href="#">Datasheet</a>
46.110.U801-000-01	Operating Tool / Release Tool For 46.110	<a href="#">Datasheet</a>
46.110.E702-000-01	B2B Connector Pico 15.6 - 1 Pole, Diameter 1mm, Without Insulating Spacer	<a href="#">Datasheet</a>
46.110.E703-001-01	B2B Connector 1 Pole, 17.6 mm, Diameter 1mm, Without Insulating Spacer	<a href="#">Datasheet</a>

## COB Connectors



BJB Kodu	Tanımı	Ürün Bilgi Föyü
47.319.2025 - 0	COB Connector Ø50 LED array 19x19	Datasheet
47.319.2013 - 0	COB Connector Ø50 LED array 20x24	Datasheet
47.360.1020 - 0	COB Connector Slim Ø35 LED array 13.5x13.5	Datasheet
47.360.1010 - 0	COB Connector Slim Ø35 LED array 19x19	Datasheet
47.360.5080 - 0	COB Connector Slim Ø44 LED array 20x24	Datasheet
47.360.5010 - 0	COB Connector Slim Ø44 LED array 19x19	Datasheet



## OptiSpot Lensler

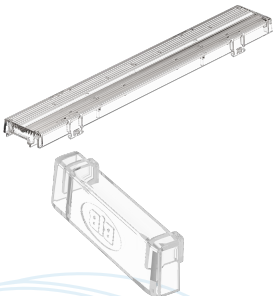


BJB Kodu	Tanımı	Ürün Bilgi Föyü
35.235.2001-001-01	Suitable For All 35 mm COB Holder, 35 mm, Spot	Datasheet
35.235.2002-001-00	Suitable For All 35 mm COB Holder, 35 mm, Medium	Datasheet
35.235.2003-001-00	Suitable For All 35 mm COB Holder, 35 mm, Flood	Datasheet
35.235.2004-001-00	Suitable For All 35 mm COB Holder, 35 mm, Wide Flood	Datasheet
35.245.2001-001-00	Suitable For All 35 mm COB Holder, 45 mm, Spot	Datasheet
35.245.2002-001-00	Suitable For All 35 mm COB Holder, 45 mm, Medium	Datasheet
35.245.2003-001-00	Suitable For All 35 mm COB Holder, 45 mm, Flood	Datasheet
35.245.2004-001-00	Suitable For All 35 mm COB Holder, 45 mm, Wide Flood	Datasheet
35.250.2001-001-00	Suitable For All 35 mm COB Holder, 50 mm, Spot	Datasheet
35.250.2002-001-00	Suitable For All 35 mm COB Holder, 50 mm, Medium	Datasheet
35.250.2003-001-00	Suitable For All 35 mm COB Holder, 50 mm, Flood	Datasheet
35.250.2004-001-00	Suitable For All 35 mm COB Holder, 50 mm, Wide Flood	Datasheet



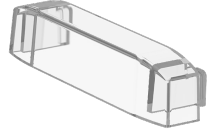
## OptiLine Optics

### OptiLine Flex



BJB Kodu	Tanımı	Ürün Bilgi Föyü
35.301.1028-001-04	1R Optic, Narrow 30° /280 x 40	Datasheet
35.301.1029-001-04	1R Optic, Medium 60° /280 x 40	Datasheet
35.301.1030-001-04	1R Optic, Wide 90° /280 x 40	Datasheet
35.301.1031-001-05	1R Optic, Double-Asym. /280 x 40	Datasheet
35.301.1032-001-05	1R Optic, Single-Asym. /280 x 40	Datasheet
35.903.E301-001-00	Endcap For 35.301 - Series	Datasheet

## OptiLine Performance With Low UGR, Pitch Depending



BJB Kodu	Tanımı	Ürün Bilgi Föyü
35.324.1001-001-05	1R Optic,Narrow 30° /283 x 40	<a href="#">Datasheet</a>
35.324.1002-001-13	1R Optic,Medium 60° /283 x 40	<a href="#">Datasheet</a>
35.324.1002-101-13	1R Optic,Medium 60° /283 x 40 - Diffus	<a href="#">Datasheet</a>
35.324.1003-001-07	1R Optic,Wide 90° /283 x 40	<a href="#">Datasheet</a>
35.324.1004-001-07	1R Optic, Double-Asym. /283 x 40	<a href="#">Datasheet</a>
35.324.1005-001-06	1R Optic, Single-Asym. /283 x 40	<a href="#">Datasheet</a>
35.324.1006-001-03	1R Optic, Extra Wide Light Sistribution	<a href="#">Datasheet</a>
35.324.1007-001-02	1R Optic, Oval Light Distribution	<a href="#">Datasheet</a>
35.348.1012-001-26	1R Lens Optic, Medium 60°, 560 x 40 x 14,1mm, Material PC	<a href="#">Datasheet</a>
35.348.1013-001-06	1R Lens Optic, Wide 90°, 560 x 40 x 14,1mm, Material PC	<a href="#">Datasheet</a>
35.320.1001-001-00	1R Lens Optic, Dual lens - 1R Optic,Wide 90° /283 x 40	<a href="#">Datasheet</a>
35.903.E304-002-02	Endcap For 35.324.102x And 35.348.101x	<a href="#">Datasheet</a>



## OptiLine 3 x 11



BJB Kodu	Tanımı	Ürün Bilgi Föyü
35.333.1011-004-00	3x11 Optics Slim, Narrow, 61 mm x 286 mm, Key And Slot System	<a href="#">Datasheet</a>
35.333.1012-004-00	3x11 Optics Slim, Medium, 61 mm x 286 mm, Key And Slot System	<a href="#">Datasheet</a>
35.333.1013-004-00	3x11 Optics Slim, Wide, 61 mm x 286 mm, Key And Slot System	<a href="#">Datasheet</a>
35.903.1007-003-01	Endcap For 35.333.10xx - 3rd Generation	<a href="#">Datasheet</a>



## BJB Optic P2F



BJB Kodu	Tanımı	Ürün Bilgi Föyü
28.905.U101-001-01	For Optics 35.333	<a href="#">Datasheet</a>

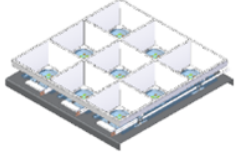
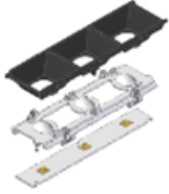
## OptiLine Louvre

BJB Kodu	Tanımı	Ürün Bilgi Föyü
35.306.1003-001-02	1 ft. Extra Wide, 260 mm x 40 mm	<a href="#">Datasheet</a>
35.306.1004-001-03	1 ft. SA 1ft. Optic	<a href="#">Datasheet</a>
35.306.1005-001-03	1 ft. DA . Optic	<a href="#">Datasheet</a>
35.306.2001-002-05	1 ft. Raster / Grid In White	<a href="#">Datasheet</a>
35.306.2001-102-05	1 ft. Raster / Grid / Black	<a href="#">Datasheet</a>
35.312.2001-001-04	2 ft. Raster / Grid In White	<a href="#">Datasheet</a>
35.312.2001-101-04	2 ft. Raster / Grid / Black	<a href="#">Datasheet</a>



## OptiLine Louvre 3x3

BJB Kodu	Tanımı	Ürün Bilgi Föyü
35.303.1003-001-00	Optik 1/2 ft. Extra Wide, 125 mm x 40 mm	<a href="#">Datasheet</a>
35.109.2001-001-00	3x3 Downlight Grid, 142 x 142, Whit	<a href="#">Datasheet</a>
35.109.2001-101-00	3x3 Downlight Grid, 142 x 142, Black	<a href="#">Datasheet</a>
35.303.1003-001-00	Optik 1/2 ft. Extra Wide, 125 mm x 40 mm	<a href="#">Datasheet</a>
35.303.2001 - 0	0,5 ft Louvre / White - Infinite Line	<a href="#">Datasheet</a>
35.303.2001 - 0	0,5 ft Louvre / Black - Infinite Line	<a href="#">Datasheet</a>



## Louvre Mini (18mm)



BJB Kodu	Tanımı	Ürün Bilgi Föyü
35.316.A001-000-00	1ft Micro Louvre, Infinite Line, White	<a href="#">Datasheet</a>
35.316.A001-100-00	1ft Micro Louvre, Infinite Line, Black	<a href="#">Datasheet</a>
35.308.A001-000-00	0,5 ft 30° Lens For Micro Louvre	<a href="#">Datasheet</a>
35.308.A002-000-00	0,5 ft 80° Lens For Micro Louvre	<a href="#">Datasheet</a>

## Optiline Square Optics

### 4 x 4 (Outdoor) Zhaga Book 15



BJB Kodu	Tanımı	Ürün Bilgi Föyü
35.116.1001-002-03	4x4 Optics , 50 x 50 mm, Lesna Typ I, For Mid Power LEDs 3030, Screw Fixing M3	<a href="#">Datasheet</a>
35.116.1002-002-04	4x4 Optics 50 x 50 mm, Lesna Typ II, For Mid Power LEDs 3030, Screw Fixing M3	<a href="#">Datasheet</a>
35.116.1003-002-03	4x4 Optics , 50 x 50 mm, Lesna Typ III, For Mid Power LEDs 3030, Screw Fixing M3	<a href="#">Datasheet</a>
35.116.1004-002-03	4x4 Optics 50 x 50 mm, Lesna Typ IV, For Mid Power LEDs 3030, Screw Fixing M3	<a href="#">Datasheet</a>
35.116.1005-002-03	4x4 Optics , 50 x 50 mm Lesna Typ V, For Mid Power LEDs 3030, Screw Fixing M3	<a href="#">Datasheet</a>
35.116.1006-001-01	4x4 Optics Spot, 50 x 50 mm, For Mid Power Leds type 3030, Screw Fixing M3	<a href="#">Datasheet</a>
35.116.1007-001-01	4x4 Optics Medium, 50 x 50 mm, For Mid Power Leds 3030, Screw Fixing M3	<a href="#">Datasheet</a>
35.116.1008-001-01	4x4 Optics Wide, 50 x 50 mm, For Mid Power Leds 3030, Screw Fixing M3	<a href="#">Datasheet</a>
35.116.1009-001-02	4x4 Optics Oval, 50 x 50 mm, For Mid Power Leds Type 3030, Screw Mounting M3	<a href="#">Datasheet</a>

### 8 in 1 (Outdoor) Zhaga Book 15



BJB Kodu	Tanımı	Ürün Bilgi Föyü
35.108.1001-002-04	8in1 Street-Optic, typ 1S, Material PMMA, Fixing Screw M3	<a href="#">Datasheet</a>
35.108.1002-002-05	8in1 Street-Optic, typ 2S, Material PMMA, Fixing Screw M3	<a href="#">Datasheet</a>
35.108.1003-002-04	8in1 Street-Optic, typ 3M, Material PMMA, Fixing Screw M3	<a href="#">Datasheet</a>
35.108.1004-002-04	8in1 Street-Optic, typ 4M, Material PMMA, Fixing Screw M3	<a href="#">Datasheet</a>
35.108.1005-002-05	8in1 Street-Optic, typ 5 Square, Material PMMA, Fixing Screw M3	<a href="#">Datasheet</a>

## OptiLine Square: 2 x 2 (Outdoor)



BJB Kodu	Tanımı	Ürün Bilgi Föyü
35.104.1001-001-03	2x2 Optic, 50 x 50 mm, lesna Typ I, For 5050 Leds, Screw Fixing M3	<a href="#">Datasheet</a>
35.104.1002-001-03	2x2 Optic, 50 x 50 mm, lesna Typ V, for 5050 Leds, Screw Fixing M3	<a href="#">Datasheet</a>
35.104.1003-001-03	2x2 Optic, 50 x 50 mm, lesna Typ II M, for 5050 Leds, Screw Fixing M3	<a href="#">Datasheet</a>
35.104.1004-001-02	2x2 Optik, 50 x 50 mm, Extra wide, for 5050 Leds, Screw Fixing M3	<a href="#">Datasheet</a>
35.104.1005-001-03	2x2 Optic, 50 x 50 mm, lesna Typ IV M, For 5050 Leds, Screw Fixing M3	<a href="#">Datasheet</a>
35.104.1006-001-03	2x2 Optic, 50 x 50 mm, lesna Typ 3, for 5050 Leds, Screw Fixing M3	<a href="#">Datasheet</a>
35.104.1007-001-03	2x2 Optic, 50 x 50 mm, Narrow, For 5050 Leds, Screw Fixing M3	<a href="#">Datasheet</a>
35.104.1008-001-03	2x2 Optic, 50 x 50 mm, Medium, For 5050 Leds, Screw Fixing M3	<a href="#">Datasheet</a>
35.104.1009-001-02	2x2 Optic, 50 x 50 mm, Wide, For 5050 Leds, Screw Fixing M3	<a href="#">Datasheet</a>
35.104.1010-001-02	2x2 Optic, 50 x 50 mm, Type 2 M, for 5050 Leds, Screw Fixing M3	<a href="#">Datasheet</a>
35.104.1011-001-01	2x2 Optic, 50 x 50 mm, Type 2 M Cutoff, For 5050 Leds, Screw Fixing M3	<a href="#">Datasheet</a>
35.104.1012-001-01	2x2 Optic, 50 x 50 mm, Type 3 M Cutoff, For 5050 Leds, Screw Fixing M3	<a href="#">Datasheet</a>
35.104.1013-001-02	2x2 Optic, 50 x 50 mm, Wxtremely Narrow, For 5050 Leds, Screw Fixing M3	<a href="#">Datasheet</a>
35.104.1014-001-03	2x2 Optic, 50 x 50 mm, Type 2 L, For 5050 Leds, Screw Fixing M3	<a href="#">Datasheet</a>
35.104.1015-001-02	2x2 Optic, 50 x 50 mm, Type 3 L, For 5050 Leds, Screw Fixing M3	<a href="#">Datasheet</a>
35.104.1016-001-02	2x2 Optik, 50 x 50 mm, Oval, for 5050 Leds, Screw Fixing M3	<a href="#">Datasheet</a>
35.104.1017-001-01	2x2 Optic, 50 x 50 mm, lesna Typ 3 M, For 5050 Leds, Screw Fixing M3	<a href="#">Datasheet</a>



## 2 Kutup



BJB Kodu	Tanımı	Ürün Bilgi Föyü
46.412.1103-001-20	TB 2 Pole, Push Fixing, Marking +/-	<a href="#">Datasheet</a>
46.412.1110-001-20	TB 2 pole, Push Fixing, Marking 1-N	<a href="#">Datasheet</a>

## 3 Kutup



BJB Kodu	Tanımı	Ürün Bilgi Föyü
46.413.1111-001-62	TB 3 Pole, Push Fixing, Marking +/-	<a href="#">Datasheet</a>
46.413.1114-001-62	TB 3 Pole, Push Fixing, Marking L-N	<a href="#">Datasheet</a>
46.413	Tırnaklı Vidali Klemens	<a href="#">Datasheet</a>



## 4 Kutup

BJB Kodu	Tanımı	Ürün Bilgi Föyü
46.414.1124-001-46	TB 4 Pole, Push Fixing, Earth Bracket, Marking N-EZ-1-2	<a href="#">Datasheet</a>



## 5 Kutup

BJB Kodu	Tanımı	Ürün Bilgi Föyü
46.415.1111-001-80	TB 5 Pole, Push Fixing, Marking 3-N-EZ-1-2	<a href="#">Datasheet</a>
46.415.1114-001-80	TB 5 Pole, Push Fixing, Earth Bracket, Marking 3-N-EZ-1-2	<a href="#">Datasheet</a>



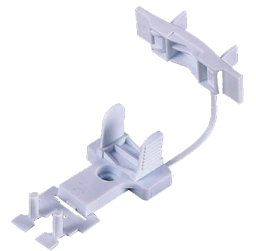
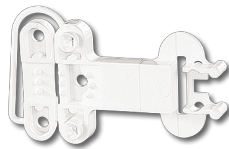
## RAST 5



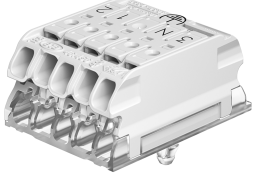
BJB Kodu	Tanımı	Ürün Bilgi Föyü
46.455.3114-001-30	Rast 5 TB, 5 Pole, With Push Fixing, Marking 3-N-EZ-1-2, Earth Bracket	<a href="#">Datasheet</a>

## Aksesuarlar

BJB Kodu	Tanımı	Ürün Bilgi Föyü
46.903.E371-001-06	Twin Cable Clamp, For Screw Fixing	<a href="#">Datasheet</a>
46.413.E352-001-07	Cable Clamp f. Terminal Blocks, 3 Pole to 5 Pole	<a href="#">Datasheet</a>
46.413.E371-001-21	Cable Clamp f. Terminal Blocks, 3 Pole to 5 Pole	<a href="#">Datasheet</a>
46.413-416	Vidasız Kablo Tutucu	<a href="#">Datasheet</a>



## Compact RAST 5 Terminal Block



BJB Kodu	Tanımı	Ürün Bilgi Föyü
46.456.1002-000-00	With Push Fixing, Ground Sign, Marking 3 N EZ 1 2	<a href="#">Datasheet</a>
46.456.1004-000-00	With Push Fixing, Rek Marking 3 N EZ 1 2	<a href="#">Datasheet</a>
46.456.1005-000-00	With Push Fixing, Ground Sign, Marking L N EZ DA+ DA-	<a href="#">Datasheet</a>



## Universal Installation Connectors

BJB Kodu	Tanımı	Ürün Bilgi Föyü
46.810.1001-003-00	Installation Terminal Block, 2 Connections, With Release Lever, w/o Marking, 24 A / 450 V, 0,2 - 2,5 mm <sup>2</sup>	<a href="#">Datasheet</a>
46.810.1002-003-00	Installation Terminal Block, 3 Connections, With Release Lever, w/o Marking, 24 A / 450 V, 0,2 - 2,5 mm <sup>2</sup>	<a href="#">Datasheet</a>
46.810.1003-003-00	Installation Terminal Block, 5 Connections, With Release Lever, w/o Marking, 24 A / 450 V, 0,2 - 2,5 mm <sup>2</sup>	<a href="#">Datasheet</a>



# Mains Disconnecter 47.131 - 3 Pole For Outdoor Lighting



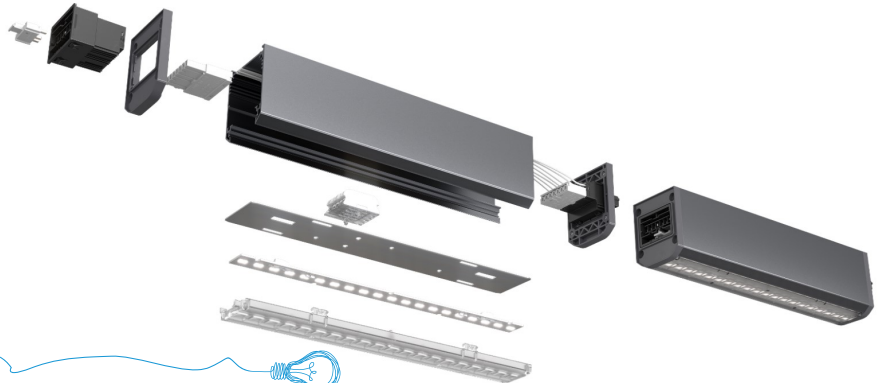
BJB Kodu	Tanımı	Ürün Bilgi Föyü
47.131.2001-001-00	Mains Disconnecter - Plug, Plug Contact On One Side With Release Function	<a href="#">Datasheet</a>
47.131.1001-001-00	Mains Disconnecter - Socket, Plug Contact On One Side With Release Function	<a href="#">Datasheet</a>



## Trunking system

### 7 Kutuplu

BJB Kodu	Tanımı	Ürün Bilgi Föyü
47.514.3107-101-06	Supply Connector, A, (0,5-1,5 - L1/L2/L3/PE/N/DA/DA)	<a href="#">Datasheet</a>
47.514.3207-101-05	Supply Connector, B, (0,5-1,5 - 1/2/3/4/5/6/7)	<a href="#">Datasheet</a>
47.514.U301-102-04	Phase Selection Grey	<a href="#">Datasheet</a>
47.514.4107-001-00	Male Main Connector, 7 Pole	<a href="#">Datasheet</a>
47.514.5107-001-00	Female Main Connector, 7 Pole	<a href="#">Datasheet</a>



# Receptacle 47.121 For Communication And Sensor Units (Zhaga Book 18)

## Base-Plate / Dome, Cover for Receptacle 47.121 (Zhaga Book 18)

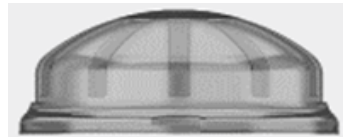
BJB Kodu	Tanımı	Ürün Bilgi Föyü
47.121.U303-001-01	Receptacle with "BJB-cut out"	<a href="#">Datasheet</a>
47.121.E305-001-00	Lock Nut M20	<a href="#">Datasheet</a>
47.121.E702-102-00	Lock Washer	<a href="#">Datasheet</a>
47.121.E303-001-00	Sealing Cap Black	<a href="#">Datasheet</a>
47.121.E303-101-00	Seal Cap Anthracite Grey	<a href="#">Datasheet</a>
47.121.E303-201-00	Seal Cap Grey	<a href="#">Datasheet</a>



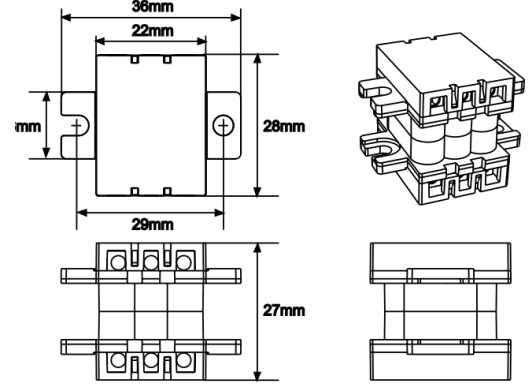
## (Zhaga Book 18) Sensor Case

### Base-Plate / Dome, Cover for Receptacle 47.121 (Zhaga Book 18)

BJB Kodu	Tanımı	Ürün Bilgi Föyü
47.921.E801-001-01	Dome 33.4 mm Low	<a href="#">Datasheet</a>
47.921.E802-001-01	Dome 58,4 mm High	<a href="#">Datasheet</a>
47.921.U801-001-00	Base Plate 80 mm	<a href="#">Datasheet</a>



ER Kodu	Tanımı	Ürün Bilgi Föyü
LE002	Mini Devre Kesici LTDS-100M	Datasheet



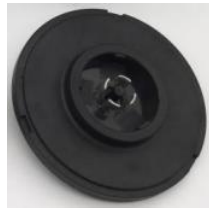
## Zhaga Konnektör

ER Kodu	Tanımı	Ürün Bilgi Föyü
LE001	Zhaga Konnektör LT 600	Datasheet



## Zhaga Sensör Kutusu

ER Kodu	Tanımı	Ürün Bilgi Föyü
LE007	LT600B-76 Sensör Kutusu ø 76x55MM	Datasheet
LE008	LT600B-40 Sensör Kutusu ø 40x25	Datasheet



## Nema Konnektör



ER Kodu	Tanımı	Ürün Bilgi Föyü
LE004	LT605-5pin 5pin NemaKonnektör	<a href="#">Datasheet</a>
LE005	LT605-7pin 7pin Nema Konnektör	<a href="#">Datasheet</a>



LT605-5pin



LT605-7pin

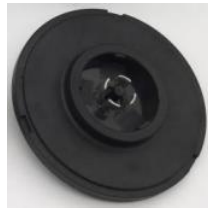
## Nema Kısa Devre Kapağı

ER Kodu	Tanımı	Ürün Bilgi Föyü
LE006	Nema Kısa Devre Kapağı LT1SC	<a href="#">Datasheet</a>



## Nema Sensör Kutusu

ER Kodu	Tanımı	Ürün Bilgi Föyü
LE011	Pin Nema Base LT100B-7PIN	<a href="#">Datasheet</a>
LE012	Photo Control Cover LT100C-C3100	



## IP68 Kablo Takımı

ER Kodu	Tanımı	Ürün Bilgi Föyü
SH001	3x1,5 mm2 IP68 Konnektörlü Kablo Takımı	<a href="#">Datasheet</a>
SH002	2x1,5 mm2 IP68 Konnektörlü Kablo Takımı	<a href="#">Datasheet</a>



ER Kodu	Tanımı	Çalışma aralığı	Verimlilik	Güç Faktörü	Boyutlar	Ürün Bilgi Föyü
ES001	60 W 12 VDC IP67	220-240 VAC	90 %	0,5	114/54/35 mm	<a href="#">Datasheet</a>
ES002	60 W 24 VDC IP67	220-240 VAC	90 %	0,5	114/54/35 mm	<a href="#">Datasheet</a>
ES003	100 W 12 VDC IP67	220-240 VAC	92 %	0,5	118/54/35 mm	<a href="#">Datasheet</a>
ES004	100 W 24 VDC IP67	220-240 VAC	92 %	0,5	118/54/35 mm	<a href="#">Datasheet</a>
ES005	150 W 12 VDC IP67	220-240 VAC	92 %	0,5	118/54/35 mm	<a href="#">Datasheet</a>
ES006	150 W 24 VDC IP67	220-240 VAC	92 %	0,5	118/54/35 mm	<a href="#">Datasheet</a>
ES007	200 W 12 VDC IP67	220-240 VAC	92 %	0,5	150/54/35 mm	<a href="#">Datasheet</a>
ES008	200 W 24 VDC IP67	220-240 VAC	92 %	0,5	150/54/35 mm	<a href="#">Datasheet</a>
ES009	300 W 12 VDC IP67	220-240 VAC	92 %	0,5	200/54/35 mm	<a href="#">Datasheet</a>
ES010	300 W 24 VDC IP67	220-240 VAC	92 %	0,5	200/54/35 mm	<a href="#">Datasheet</a>

