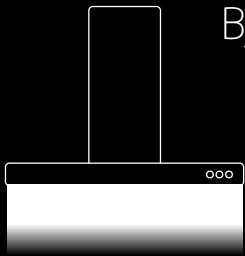
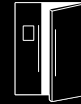


Light for Appliances



BJB///OEM-Line AIR



Lighting for downdraft hoods and
cooker hoods



Light and Automation
for Appliances

Index

Lighting for downdraft hoods and cooker hoods

S. 6 77.121
Linear LED light system
for downdraft hoods

- Light directed onto the cooker hob
- Efficient optics eliminate glare and minimise stray light



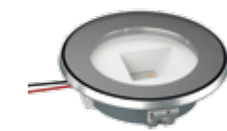
S. 10 77.101
Linear LED luminaire
for cooker hoods

- Optimum illumination of the hob by means of asymmetrical lens
- Individual design versions possible
- Freedom of design due to variable installation position
- Cover plate in glass



S. 12 77.102
Round LED luminaire
for cooker hoods

- Easy upgrade from existing halogen solutions to LED
- Excellent illumination of the hob by means of asymmetrical reflector
- Reflector eliminates glare
- Cover plate in glass



S. 14 77.107
Linear LED luminaire for
cooker hoods

- Easy installation through clip-in fixing
- Insulating plastic housing
- Beam angle asymmetrical
- Low costs due to easy installation
- Insulating plastic housing



S. 16 77.105
Linear LED luminaire
for cooker hoods

- As 77.107 but with a symmetrical beam angle



S. 18 77.104
Round LED luminaire
for cooker hoods

- Easy upgrade from existing halogen solutions to LED
- Easy installation through clip-in fixing
- Insulating plastic housing
- Beam angle symmetrical

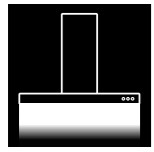


S. 20 77.113
Round LED luminaire
for cooker hoods

- As 77.104 but with an asymmetrical beam angle







BJB///OEM-Line AIR

Linear LED light system 77.121 for downdraft hoods

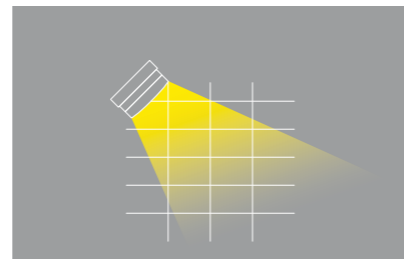


FOR GLARE-FREE LIGHT ON THE COOKER HOB

Narrow LED modules are ideal for use in downdraft hoods. To improve the lighting properties of such solutions, we use high-quality optics which provide homogeneous light distribution, reduce the amount of stray light, and prevent glare.

For this purpose, we use modules from the BJB///OEM-Line system. These are only 18 mm wide – just the right dimensions – and are equipped with the necessary contact, light control and connecting elements. These slender, compact modules are freely configurable in terms of equipment and length and are fitted with quality LEDs with a high colour rendering index.

Light emission characteristic



Optimum illumination of the hob with light directed onto the work area

ADDITIONAL FEATURES

Modular system with variable components in terms of optics, length and LED parameters (colour temperature, CRI, type, output)

LEDs

- Various configurations possible
- Possible leap forward into the next efficiency class

Thermal management

- Thermally optimised components
- Even contact pressure of the LED board on the heat sink through use of BJB fixing elements (Push-to-Fix)

Installation

- Due to the individual design of hoods, we develop the fixing concept to meet customer-specific requirements

Design

- Customer-specific design
- Customer logo possible
- Fascia in various designs and colours

Beam angle

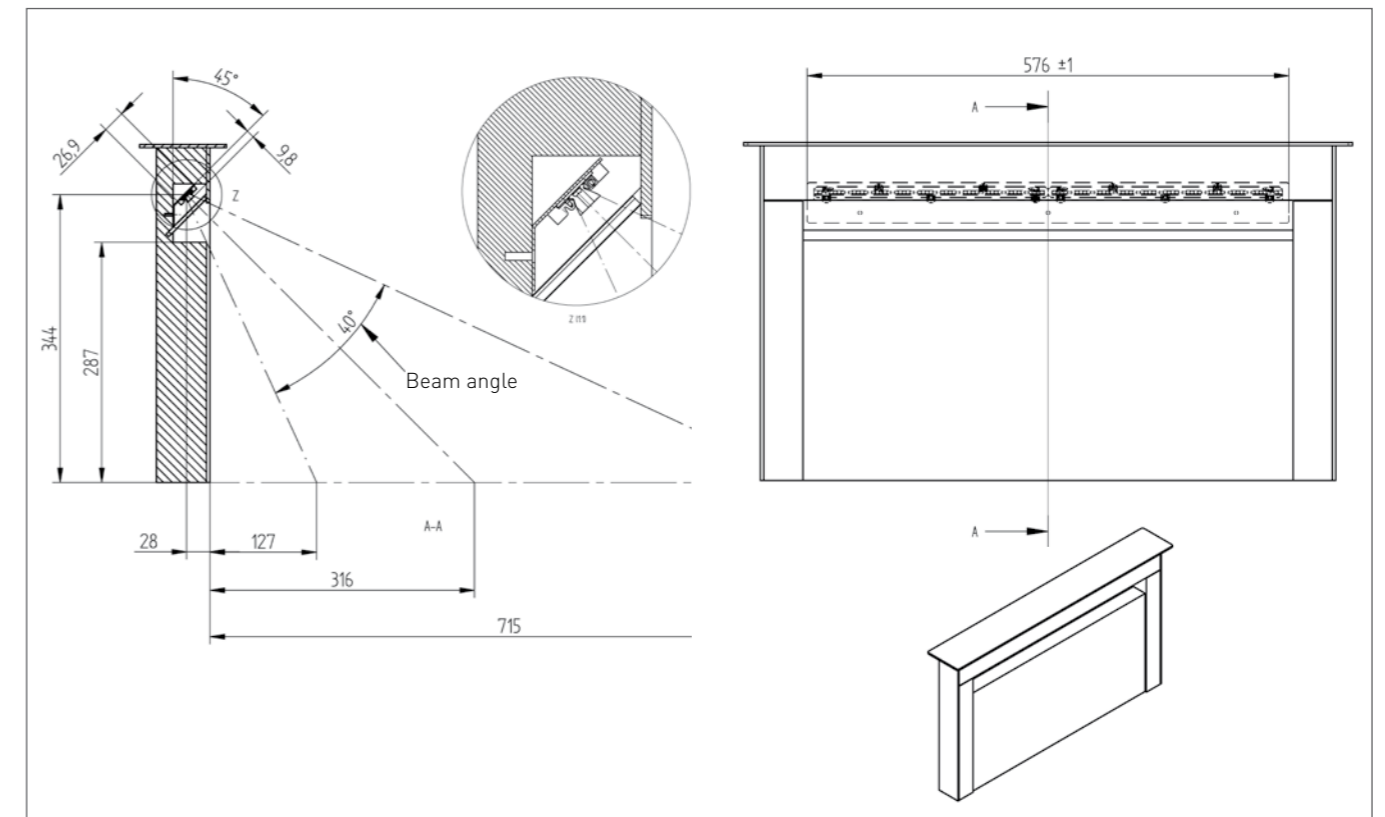
- Symmetrical

Protection class

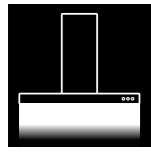
- Class III due to operation with SELV power source



Example of application







BJB///OEM-Line AIR

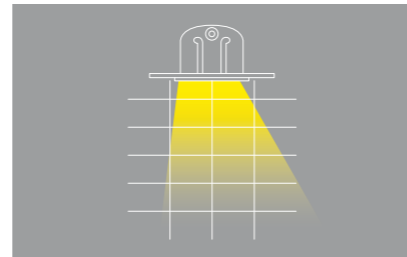
Linear LED luminaire 77.101 for cooker hoods



LIGHT FOCUSED DIRECTLY ONTO THE HOB, EXCEPTIONAL LIGHT QUALITY

The typical problem with cooker hood lighting: There is no specific, uniform illumination of the hob. Our high-quality LED solutions remedy this problem by means of asymmetrical lenses and variable positioning options. As well as providing homogeneous light distribution, they eliminate all types of glare and keep stray light to a minimum.

Light emission characteristic



Optimum illumination of the hob by means of asymmetrical lens

ADDITIONAL FEATURES

Modular system with variable components with regard to optics, design, snap-in fixing, LED parameters (colour temperature, CRI, power rating), electrical connections, length and type of conductor

LEDs

- Replace halogen luminaires
- Energy efficiency: Possibility to upgrade to a higher energy efficiency class

Thermal management

- Thermally optimised components
- Uniform contact pressure of LED board on heat sink due to BJB fixing elements (Push-to-Fix)
- Aluminium heat sink

Installation

- Front, back or side
- Coding ensures correct installation
- Snap-in function makes installation easy
- Clip-in fixing for snap-in range 0.5 - 1.5 mm

Design

- Customer-specific design
- Customer logo possible
- Faceplate in various designs and colours
- Cover plate in glass

Beam angle

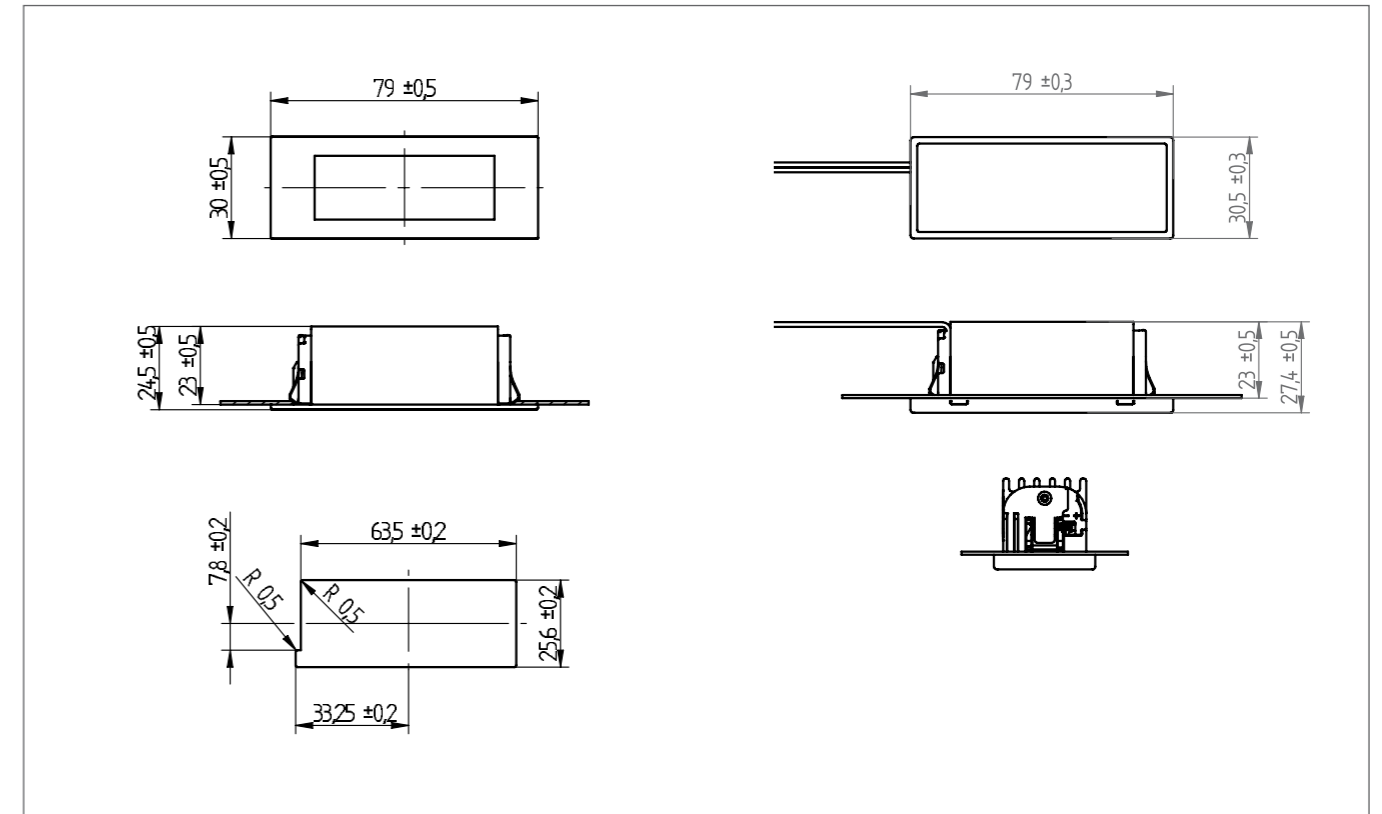
- Asymmetrical

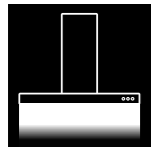
Protection class

- Class III due to operation with SELV power source



Example of application





BJB///OEM-Line AIR

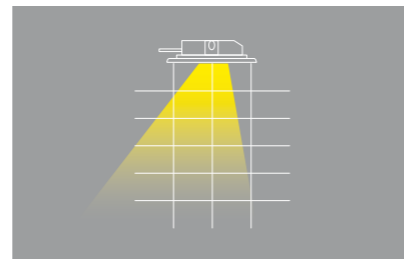
Round LED luminaire 77.102 for cooker hoods



LIGHT CONTROL AND A NEW OPERATING CONCEPT

Impressively easy to use: These high-quality LED applications can be used directly to replace current halogen luminaires with a $\varnothing = 51$ mm cut-out. Excellent illumination of the hob and absence of glare are achieved firstly by means of reflectors which ensure asymmetrical light emission, secondly through their variable positioning possibilities, and thirdly by minimizing stray light.

Light emission characteristic



Excellent illumination of the hob by means of asymmetrical reflector

ADDITIONAL FEATURES

Modular system: Variable with regard to reflector, design, snap-in fixing, LED parameters (colour temperature, CRI, power rating), electrical connections, length and type of conductor

LEDs

- Suitable for standard cut-out $\varnothing = 51$ mm
- Energy efficiency: Possibility to upgrade to a higher energy efficiency class

Thermal management

- Thermally optimised components
- Uniform contact pressure of LED board on heat sink due to BJB fixing elements (Push-to-Fix)

Installation

- Front or back
- Coding ensures correct installation
- Snap-in function makes installation easy
- Clip-in fixing for snap-in range 0.5 - 1.5 mm

Design

- Customer-specific design
- Customer logo possible
- Cover plate in glass

Material

- Stainless steel housing and snap-in bracket

Beam angle

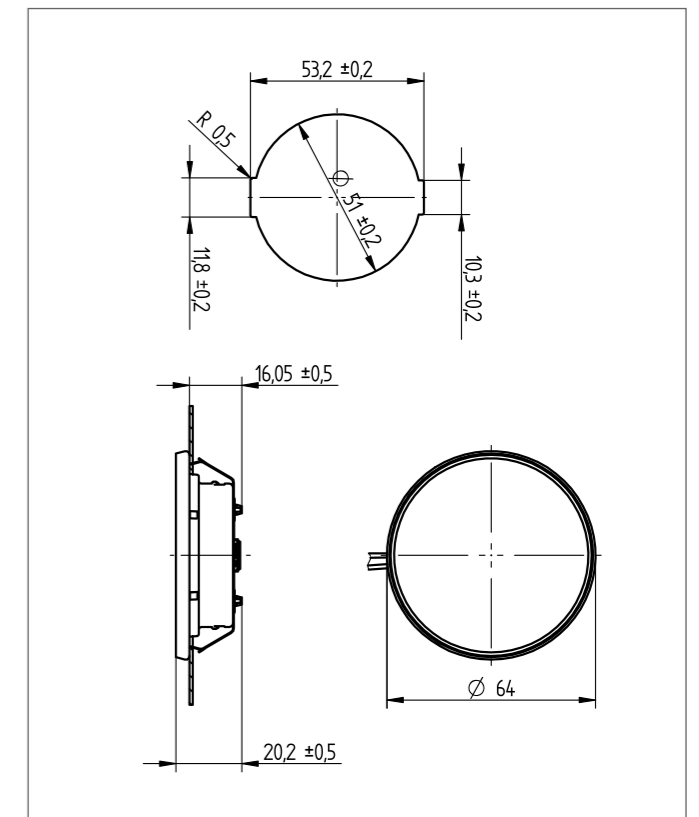
- Asymmetrical

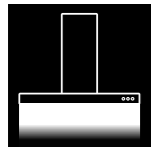
Protection class

- Class III due to operation with SELV power source



Example of application





BJB///OEM-Line AIR

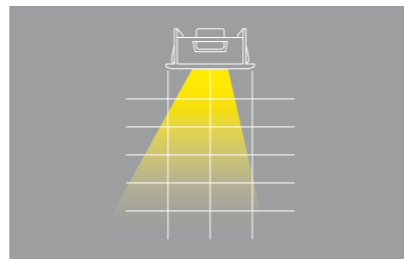
Linear LED luminaire 77.107 for cooker hoods



BETTER ILLUMINATION THROUGH LOWER LUMINANCE

Sounds paradoxical, but works perfectly: A lower luminance combined with variable positioning and an internal reflector reduces glare and provides a uniform illumination of the work surface. The reflector creates an asymmetrical beam angle, thereby directing the light specifically to the desired location. In this way, these linear LED luminaires solve a common problem of cooker hood lighting solutions – the irregular illumination of the hob.

Light emission characteristic



Light where it is needed: Specific directional light control

ADDITIONAL FEATURES

LEDs

- Suitable as replacements for halogen
- Variable LED parameters (colour temperature, CRI, power rating)
- Energy efficiency: Possibility to upgrade to a higher energy efficiency class

Installation

- Coding ensures correct installation

Design

- New design possibilities
- Customer logo can be integrated

Material

- High-quality insulating plastic housing

Electronics

- Contact by means of edge connectors with or without connecting cable

Beam angle

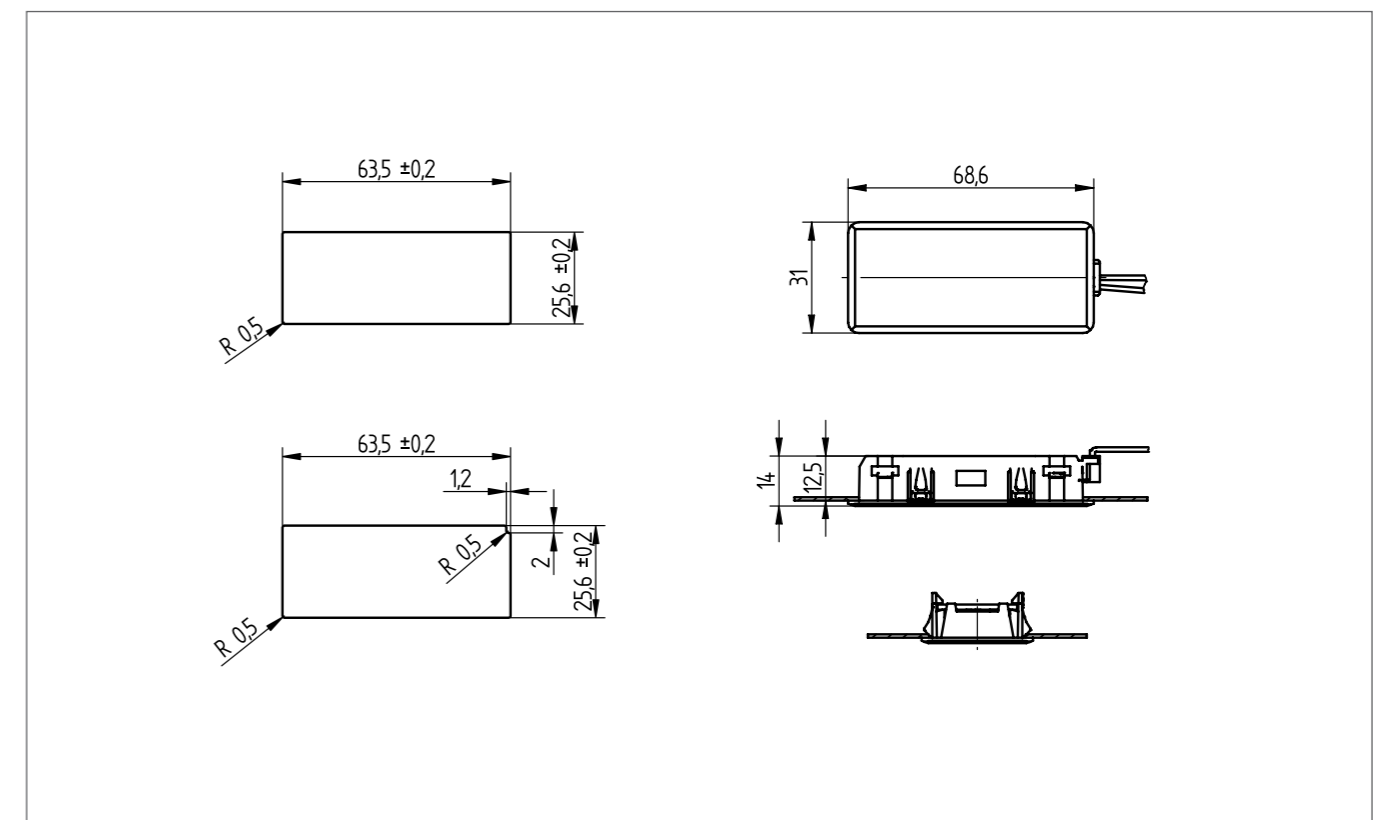
- Asymmetrical

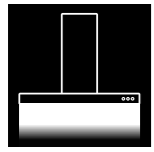
Protection class

- Class III due to operation with SELV power source



Example of application





BJB///OEM-Line AIR

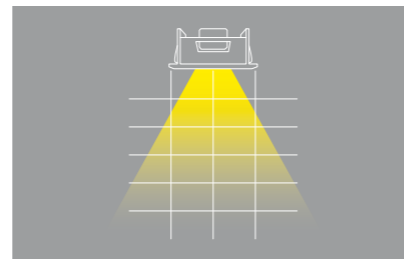
Linear LED luminaire 77.105 for cooker hoods



OUR STANDARD SOLUTION FOR LINEAR HALOGEN REPLACEMENT

LED solutions are easier to implement than one imagines. This is clearly demonstrated by our linear LED luminaires for cooker hoods. Their simple design keeps costs low. If demands increase, however, these solutions can also be upgrade as required by the use of lenses and other surface finishes.

Light emission characteristic



Illumination of the hob by means of symmetry

ADDITIONAL FEATURES

LEDs

- Symmetrical light emission characteristic
- LED variable (colour temperature, CRI, power rating)
- Energy efficiency: Possibility to upgrade to a higher energy efficiency class

Design

- Customer logo possible

Material

- High-quality insulating plastic housing

Electronics

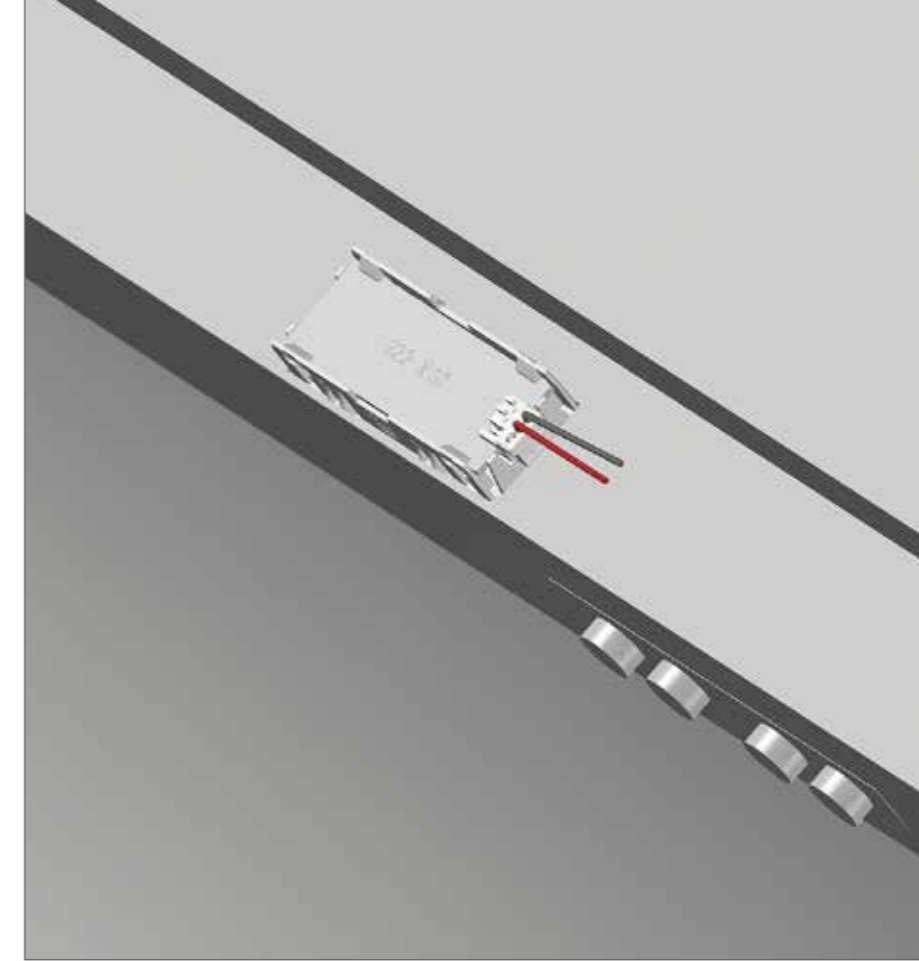
- Contact by means of edge connectors with or without connecting cable

Beam angle

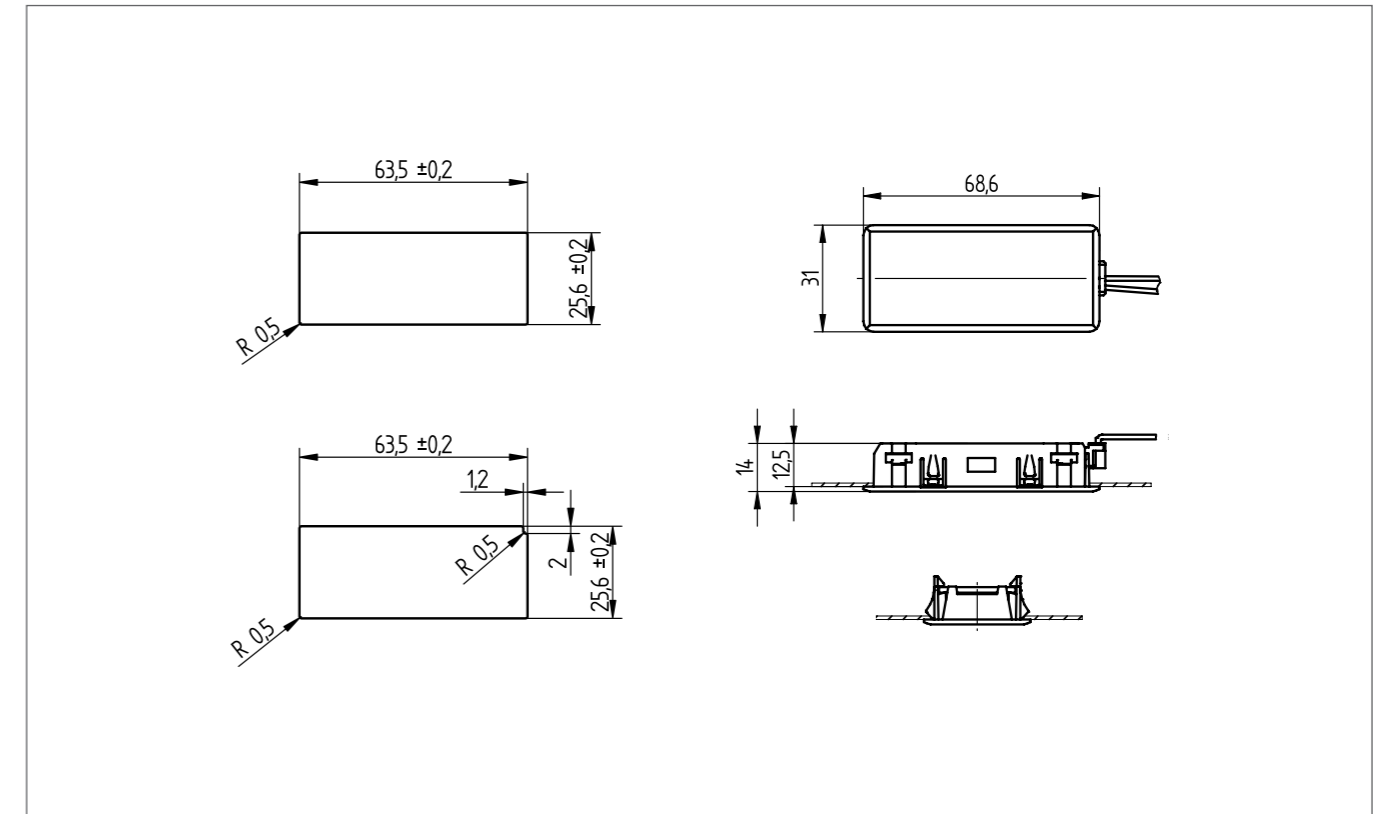
- Symmetrical

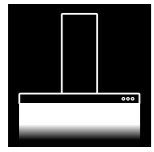
Protection class

- Class III due to operation with SELV power source



Example of application





BJB///OEM-Line AIR

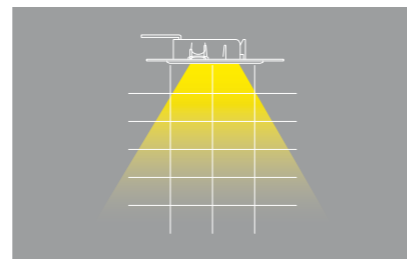
Round LED luminaire 77.104 for cooker hoods



THE QUICK REPLACEMENT FOR HALOGEN

Technological change can be so simple: These round LED applications can be used as direct replacements for halogen luminaires with a $\varnothing = 51$ mm cut-out. If required, the basic model can be upgraded by the addition of lenses and alternative surface finishes.

Light emission characteristic



Symmetrical light emission characteristic for optimum illumination

ADDITIONAL FEATURES

LEDs

- Suitable for standard cut-out $\varnothing = 51$ mm
- Symmetrical light emission characteristic
- LED variable (colour temperature, CRI, power rating)
- Energy efficiency: Possibility to upgrade to a higher energy efficiency class

Design

- Customer logo possible

Material

- High-quality insulating plastic housing

Electronics

- Contact by means of edge connectors which can be supplied with or without connecting cable

Beam angle

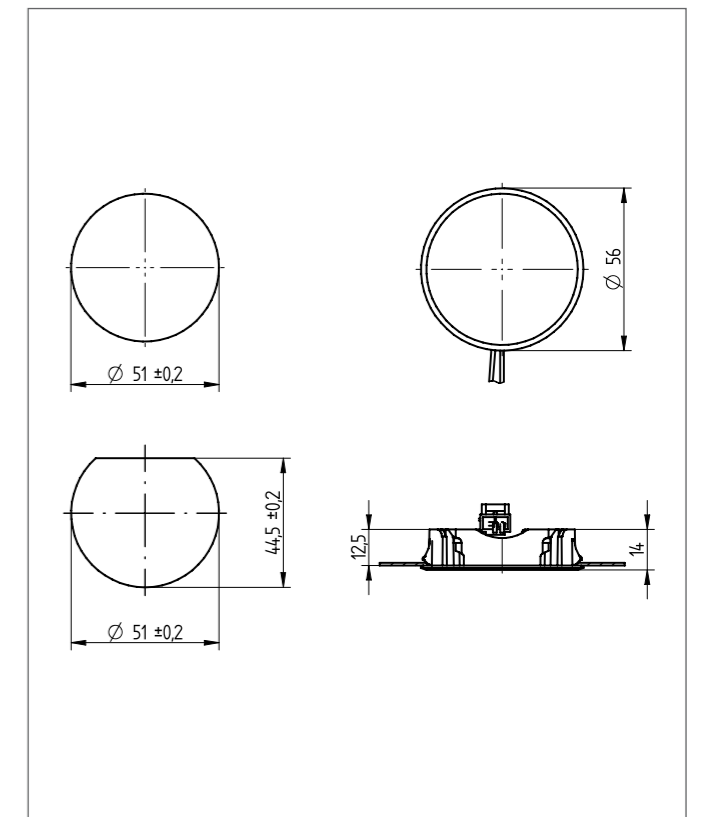
- Symmetrical

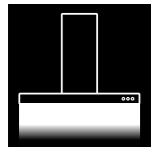
Protection class

- Class III due to operation with SELV power source



Example of application





BJB///OEM-Line AIR

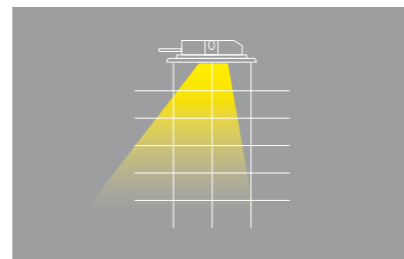
Round LED luminaire 77.113 for cooker hoods



ROUND LED LAMP WITH ASYMMETRICAL LIGHT DISTRIBUTION

This product is also designed to ensure an easy transition from halogen to LED lighting. As with lamp 77.104, 77.113 also fits in a cut-out $\varnothing = 51$ mm. The difference with this model is the light distribution, which is asymmetrical. If required, the basic housing can be upgraded to include customer-specific lenses and alternative surface finishes.

Light emission characteristic



Asymmetrical light emission characteristic

ADDITIONAL FEATURES

LEDs

- Suitable for standard cut-out $\varnothing = 51$ mm
- Symmetrical light emission characteristic
- LED variable (colour temperature, CRI, power rating)
- Energy efficiency: Possibility to upgrade to a higher energy efficiency class

Design

- Customer logo possible

Material

- High-quality insulating plastic housing

Electronics

- Contact by means of edge connectors which can be supplied with or without connecting cable

Beam angle

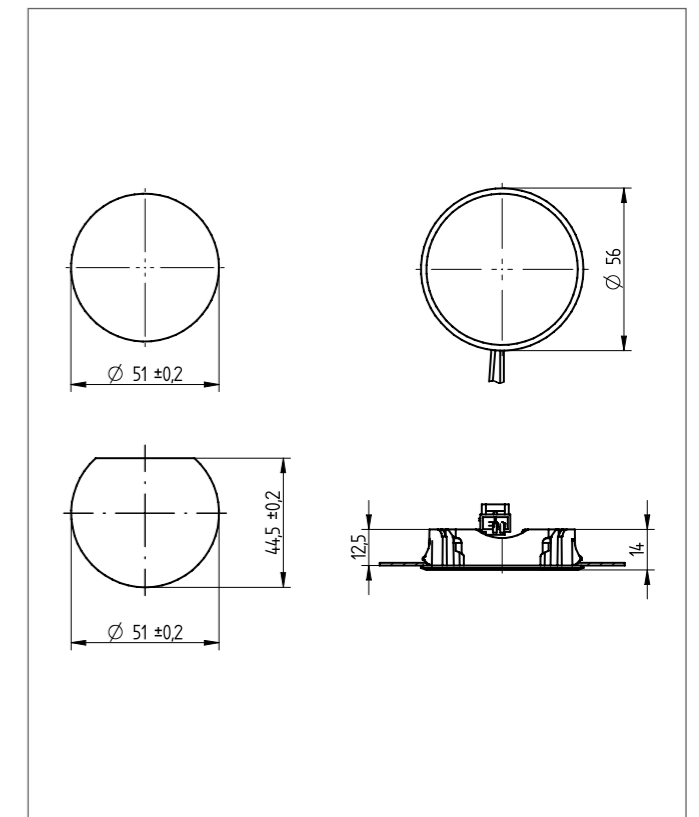
- Asymmetrical

Protection class

- Class III due to operation with SELV power source



Example of application







Light and Automation
for Appliances

BJB GmbH & Co. KG
Werler Straße 1
59755 Arnsberg
Germany
Telephone +49 29 32 9 82-0
Telefax +49 29 32 9 82-8201
info@bjb.com
www.bjb.com